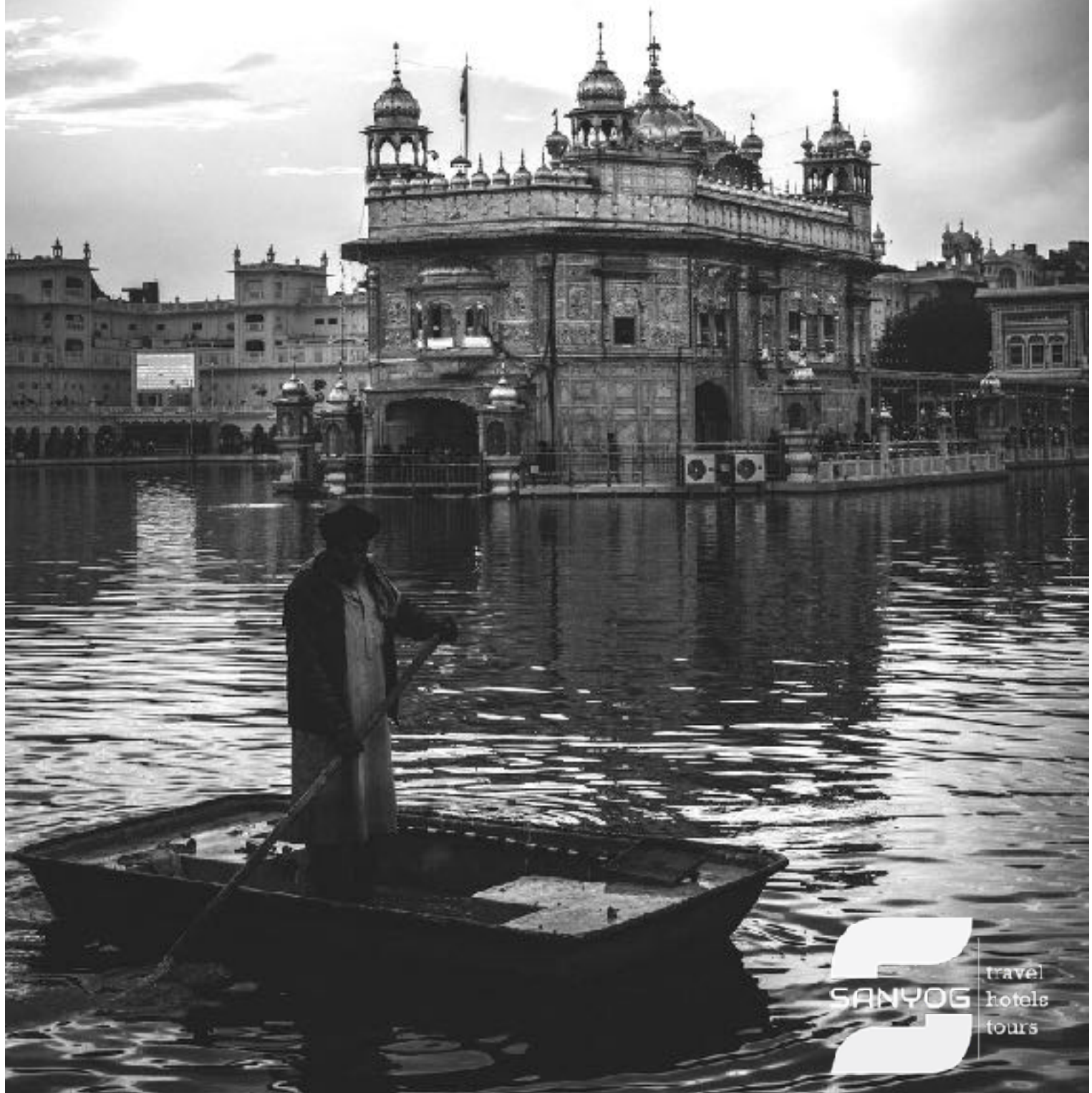


PUNJAB
HIMACHAL PRADESH

Himalayas & North India





Welcome to Himachal Pradesh
Unforgettable Himachal

Table of Content

The Story	1
Himachal Pradesh	2
Luxury Stays	5 - 18
Shimla - The Capital	19 - 20
Dharamshala	21 - 22
Lahaul & Spiti Valley	23 - 24
Amritsar - Punjab	25 - 26
Explore	27 - 44
Experiences	47 - 62
Fairs & Festivals	65 - 66
Activities	67 - 74
General Information	76
Luxury Journeys	79 - 84
Wedding & Events	87 - 88
Hola Mohalla Festival	89 - 90
Cricket in Dharamshala	93 - 94
Farm Stays in Punjab	95 - 96

Sanyog Gupta Voyages

Luxury Destination Management Company

As we have evolved as a company, we have come to realise that our love lies not in booking tour packages, but in showcasing the unique experiences across the nations we serve. We realised that there are many secret corners of our world, rare moments, mysteries and stories.

Our company owned by a family, but run professionally. We have hierarchical systems which are driven by our core family values. We have come to understand we do not want to be the largest company globally. We have never tried to be the richest or the most influential. I say, we just want to be the bestest in what we do.

We are a family tradition for over three decades that have been highlighting this part of the planet. All over Indian sub-continent, we have grown to become a popular, valued and autonomous DMC providing the finest cultural experiences, personal immersions and natural wonders. We are here to build stories for our clients, tales of love, of wonderful excitement. We are proud of our past and its legacy.

‘We are real voyagers and love varying voyager’s

THE LUXURY TRAVEL EXPERTS.

YESTERDAY, TODAY, ALWAYS.

Sanyog Gupta Voyages brings to you finest luxury holidays in all over India and Asia. Indulge your passion, arrive in a private jet, travel in a limousine or a yacht, the Opulent Routes Concierge services will weave magic in your holiday experience.

www.sanyog.travel



Sanyog Gupta
President - Sales & Marketing

THIS IS THE TIME
THIS IS THE PLACE
THIS IS HIMACHAL

HIMACHAL PRADESH



IT ALL STARTS WITH Sat Sri Akaal

Himachal Pradesh tourism has something in store for nature lovers, honeymooners, adventure lovers, history buffs and spiritual seekers. The contrast in its diversity is to be seen to be believed.

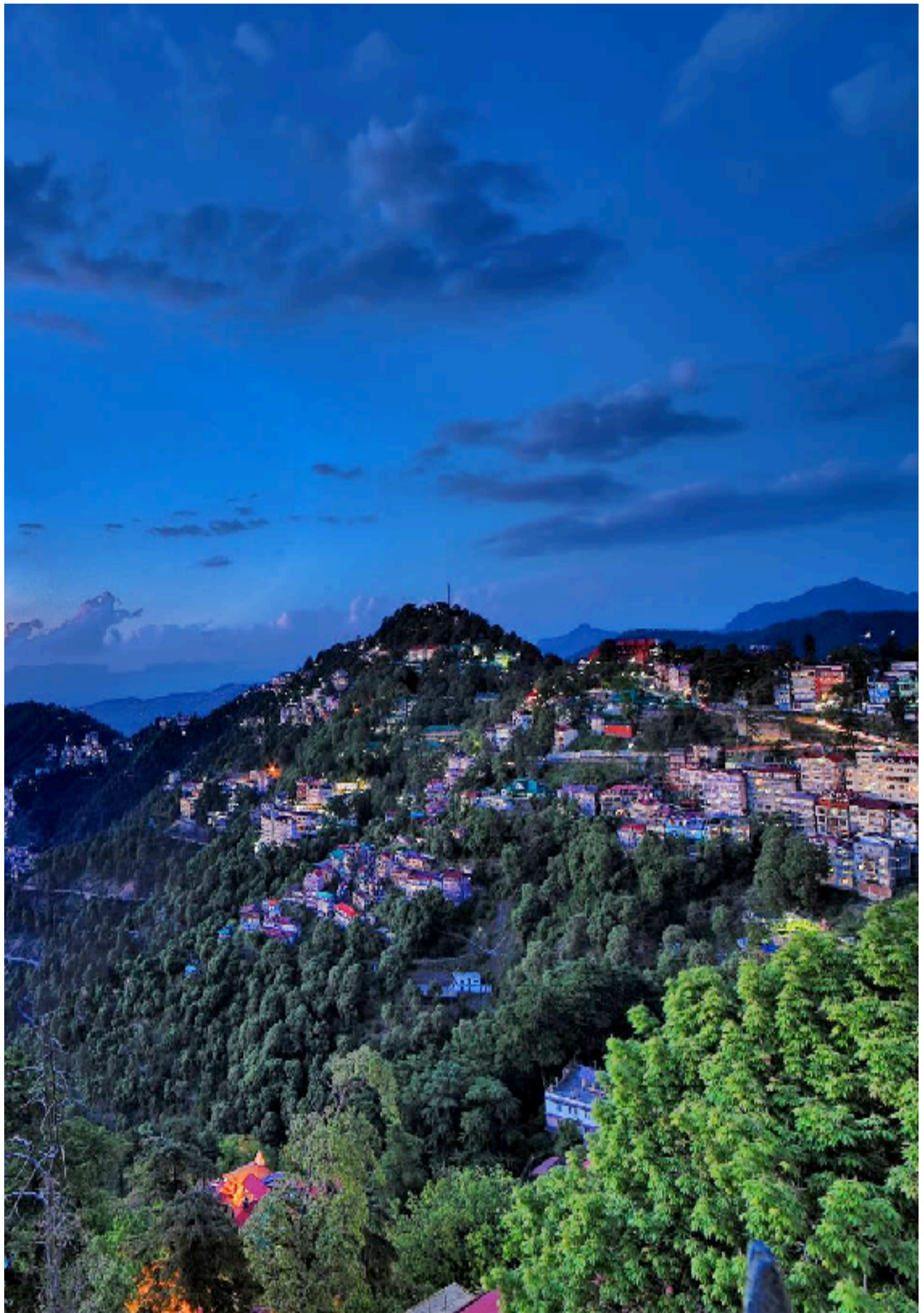
You have lush valleys like Kinnaur, Kullu and Kangra & barren terrains of Lahaul & Spiti. Tales of Malana fascinate tourists as much as the Buddhist culture in Mcleodganj.

Exploring Dalhousie, with its rich colonial past, is sheer delight. The famous Hill stations like Shimla, Kullu & Manali are dotted with meadows, orchards, quaint villages & rich colonial past.

Any sightseeing tour of Himachal should include its wonderful lakes. Quiet and still, they reflect the surroundings, both literally and symbolically.

A few of the famous lakes are Renuka, Rewalsar, Prashar, Suraj Tal & Chandratal. The views of the Himalayan Ranges fill you with excitement, from head to toe. The varied landscape of Himachal also lends itself to various adventure activities.





LUXURY STAYS



Taj Theog Resort & Spa, Shimla

Located at a 75 minutes drive from Shimla, Taj Theog Resort and Spa is surrounded by the mesmerising skylines of the Himalayan range. The hotel offers stunning 180 degree views of the Churdhar, the highest peak in the outer Himalayas. Taj Theog has 99 guest rooms and suites offering a outdoor balcony with views of the surrounding mountains. Guests can choose from 3 dining venues – Tragopan is an all-day dining restaurant offering global cuisine with some relished local Himalayan meals, Peony is an Orietal restaurant and Theog Junction is a bar.



The Oberoi Hotels, Shimla

Our story wrote its early chapters in 1934 in Shimla where Mr. M.S. Oberoi pioneered the idea of luxury hospitality in India by opening his first hotel.

The lessons self-taught, the inevitable mistakes made, the wisdom gained, the prestigious awards won. All have formed the compass for successive generations of Oberois.

- The Oberoi Cecil, Shimla
- The Oberoi Wildflower Hall, Shimla

Darang Tea Estate, Kangra

There's so much silence, the air seems thick with it. On 70 acres, there are just four cottages, bougainvillea spilling from the rooftops. There are about 500 books you can borrow from a small library for when you want to recline in front of the fireplace.

Even your digestion gets a break from an urban routine, fed with an organic diet instead, like farm fresh milk. In the sheer wide open spaces filled with green, it's easy to forget the world.





Moksha Spa, Parwanoo

The Moksha Himalaya Spa Resort brings this experience exclusively to you. Elevated 5000 ft. above sea level, this Ayurvedic health spa resort serves as a tranquil paradise on earth surrounded by the magical and mystical Shivalik ranges. This best luxury resort in Himachal Pradesh is the ideal place for weekend getaways from cities like Delhi, Chandigarh, Shimla and Kasauli.

At Moksha Himalaya Spa Resort, we promise you an experience beyond the ordinary. No matter where you are at the resort, it offers you the most spectacular view of the valley around.

Niraamaya Retreats Suryavilas, Solan

Quietly nestled on the misty Himalayan slopes of Solan, Niraamaya Retreats Suryavilas is a sublime spot of breath-taking views and bespoke opulence. Experience nature at its untouched best, where you can witness both the first snow of winter and the first sprout of spring! Spread across a sweeping stretch of 15 acres, this Niraamaya Retreat in Solan is home to 36 exquisite rooms and 18 luxury glamping cottages that provide a breath-taking view of the mountains.



Baikunth Resort, Himachal

Our exquisite resorts in Kasauli and Manali offer well-equipped rooms & spacious accommodation for a lavish stay. Thoughtfully appointed in the lap of nature, you can take in the bounties of mother earth in a relaxing and leisurely atmosphere.

Any of the locations is the perfect getaway. Ideal for those times that you just want to get away from the hustle and bustle of the city and leave all your troubles and stress behind.

- Baikunth Resort, Manali
- Baikunth Resort, Kasauli



The Himalayan Spa Resort, Manali

Built in the Victorian Gothic Revival style and perched at an elevation of 2003 metres, The Himalayan is the premier luxury resort in Manali area of North Western Indian Himalaya.

Our Castle and Cottages are set in the midst of apple and cherry orchards, overlooking resplendent snow capped mountain peaks and waterfalls plunging down rock faces. In this privileged backdrop we find inspiration, whilst looking towards a vibrant and propitious future.



Vallari Hotels, Himachal Pradesh

A perfect getaway from the busy and dull city life; experience peace and tranquillity at our close-to-nature properties. Fresh air, fascinating views, and unspoken peace, discover the 'New You'. Vallari Hotels is not just a hotel chain, it is a collection of rich experiences that clusters an elegant luxurious stay to a budgeted cosy stay for you and your loved ones.

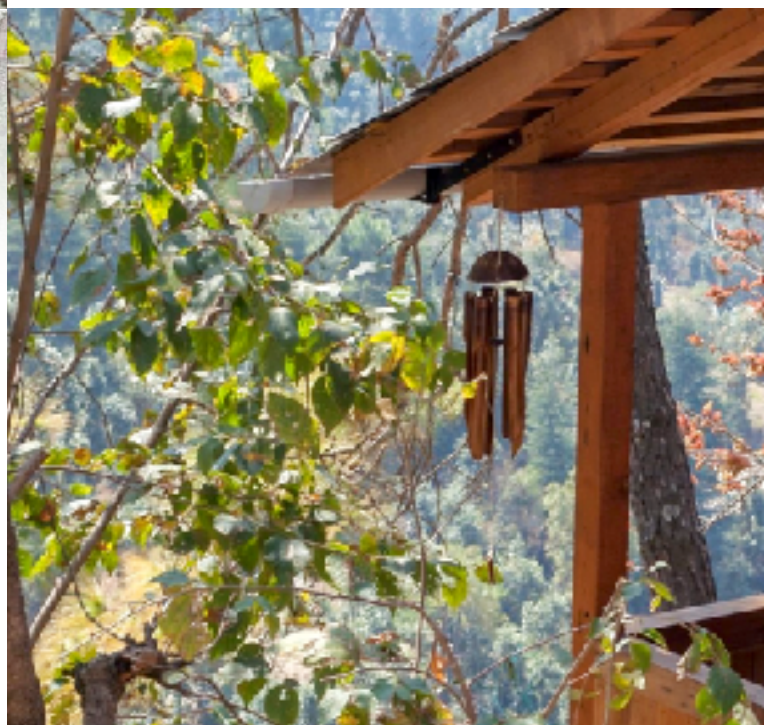
- The Chalets Naldehra, Shimla Taptapani Road
- The Chateau Garli, Kangra

Suro Treehouse Resort, Solan

An Oasis of Wellness.

Suro Resort, centrally located in Kaithalighat offers the best luxury resort in Shoghi and around Shimla.

Our stylish treehouse chalet accommodations are entirely designed to give you a warm sense of relaxation and well being. The breathtaking views set amongst a deodar pine and oak forest will let you unwind from hectic schedules.





WelcomHotel by ITC, Shimla

Conveniently located only 10 km from the hot spots of Shimla, Welcomhotel Shimla sits in quiet splendour, nestled among the evergreen forests of the lower Himalayas. Entwining the town's cultural thread, aesthetics and recreational essence with our signature hospitality, the hotel brings you exquisite experiences across culture, cuisine & nature. Dive into local and international flavours at the multi-cuisine café or experiment with eclectic beverages at the cocktail bar for a taste of fine gourmet selections. Soak in the bliss of forest bathing and bird choirs or spend the day at leisure with rejuvenating spa services.

Regenta Resort & Spa, Mashobra

Swirled in the mist of time and set in the Himalayan foothills Regenta Resort and SPA is scenic, elegant and upscale hotel. It is in close proximity to the Himalayan Nature Park and The Ridge at Shimla Mall road.

The hotel is a wonderful mix of old world charm and new-age conveniences, and promises to give its guests an unparalleled experience.

The exclusively appointed rooms feature a cottage -style decor, free Wi-Fi and TVs most of the rooms have a mountain and valley view.



Royal Tulip Kufri, Shimla

Offering a seasonal indoor pool, barbecue and terrace, Royal Tulip Shimla, Kufri is located in Shimla in the Himachal Pradesh Region, 9 km from The Mall Road. The hotel has a spa centre and fitness centre, and guests can enjoy a meal at the restaurant or a drink at the bar. Free private parking is available on site.

All rooms are equipped with a flat-screen satellite TV. Certain units have a seating area where you can relax. Each room is equipped with a private bathroom equipped with a shower. Royal Tulip Shimla, Kufri features free WiFi throughout the property.

Radisson Jass, Shimla

Situated in the Himalaya Mountains, Radisson Jass Shimla boasts a convenient location near the historic city center and inspiring views from our rooms and suites.

Stay just minutes from popular area attractions like the Gaiety Heritage Cultural Complex, Jakhu Temple, and Christ Church. Spend the afternoon touring the former Viceregal Lodge at the Indian Institute of Advanced Study or shopping for souvenirs at Shimla's popular Mall.

As an added convenience, Shimla Airport (SLV) is only 26 kilometers away from our hotel.



Larisa Resort, Manali

Amidst the sweet essence of the apple orchards, and just a few sighs away from the clouds, lies the exquisitely curated Larisa Manali. Where a blend of nature and luxury welcomes you with a signature style hospitality.

The resort is at a comfortable drive of 1 hr 20 minutes from the Kullu Airport, and we can have our drivers waiting for you at arrival.

Everything at Larisa Manali has an air of bliss. The table-top orchard land, speckled with exotic flowers, organic garden and rooms that are a walk away from each other. It is sited somewhere in the heart of the mountains where you can discover yourself within an uncluttered environment.

Fortune Park, Dalhousie

Located in Dalhousie, Fortune Park Dalhousie has a bar and a terrace. Among the facilities of this property are a restaurant, a 24-hour front desk and room service, along with free WiFi throughout the property. The hotel features an indoor pool, fitness centre and a kids' club.

All units at the hotel are equipped with a seating area and a flat-screen TV with satellite channels. All guest rooms at Fortune Park Dalhousie include air conditioning and a desk. A continental breakfast is available daily at the accommodation.





Fortune Select Forest Hill, Kasauli

Perched above the pine trees that decorate the Mahiya valley, bursting with fairytale charm, stands the picturesque property – Fortune Select Forest Hill, Mahiya, Near Kasauli. As its name suggests, this incredibly quaint hotel is located amid a forest and on a hill, providing with a secluded spot to disconnect from the madness of daily life and spend some quality time with loved ones. Here you can experience lush greenery in the lap of nature. With a team of benevolent, dedicated and ever-smiling staff, Fortune Select Forest Hill is ready to cater flawless service, multiple high-end amenities and a wide choice of fun activities for all age groups. Set in the Kasauli Valley, the property is a short drive from the Himalayan Express Highway (NH-22).

Hyatt Regency, Dharamshala

Hyatt Regency Dharamshala Resort is spread across 6.5 acres, situated in the profound depths of the Dhauladhar mountain range of the Outer Himalayas. It is a rare class of resort which manages to be picturesquely ideal for family, solo, and romantic getaways. There is something unique for everyone. The region is very popular amongst explorers, followers, and students of Buddhism. Hyatt Regency Dharamshala features 80 guest accommodations including of 4 private villas, 3 Suites, 17 Club rooms.

All the resort guestrooms are spacious offering fresh Himalayan air and signature views of either lush garden amid Deodar forest or the magnificent snow-capped Dhauladhar range. Enjoy your stay.



Manuallaya The Resort & Spa, Manali

ManuAllaya embodies the best of Himachal's iconic history, art, and culture. Fusing modern design with traditional elegance, ManuAllaya is a stylish, contemporary luxury resort, basking in an enviable location that serves Manali.

The resort features spacious rooms, cottages, ample open lawns, an array of dining options, sophisticated meeting facilities, TVA Spa, an indoor temperature-controlled pool, state of the art gymnasium is close to the Mall Road.

Span Resort & Spa, Manali

Span Resort & Spa was established in 1981 and retains the privilege of being one of the oldest, single largest luxury resort in the valley of the gods. Span Resort & Spa is located on an altitude of 4750 ft. above sea level. In addition it is also on the banks of the mighty gushing Beas river. This river side resort is spread across over 12 acres of lush green walnut orchards, amidst the backdrop of deodar and pine forests surrounded by mountains. Owing to it's perfect location with it's divine & serene atmosphere in Kullu Manali, Span Resort & Spa remains the most favourite five star luxury, river side resort in Manali for friends & families with it's unique holistic & healing approach.



The Anantmaya Resort, Manali

The name 'Anantmaya' – is a combination two Sanskrit words namely 'Anant' and 'Maya' thereby meaning god's endless & blissful creation. Designed to enhance comfort & the feeling of personal space – the exteriors of the resort have been inspired by the english tudor look.

Attention to detail in design, layout, furniture & fittings will be clear as one takes in the layout & interiors of the resort. The interiors are classic & elegant while providing all the modern amenities one expects. Open spaces have been landscaped into lush, green gardens that are full of flowers. The resort entrance has 80 feet of direct road head access & we have ample parking space for guest vehicles.



Infinitea Tea Garden Resort, Palampur

Infinitea Tea Garden Resort features free WiFi and views of mountain in Palampur. The property has a bar, as well as a restaurant serving Chinese cuisine. Guests have access to a spa and wellness centre including a sauna, a fitness centre and an indoor pool. The rooms at the hotel are fitted with a seating area, a flat-screen TV with cable channels and a private bathroom with free toiletries and a shower. All guest rooms will provide guests with a wardrobe and a kettle.





The Grand Welcome, Shimla

The Grand Welcome Hotel is Located in the beautiful city of Shimla, The hotel is located at a distance of 8 Km from the railway stations, 11 Km from Shimla ISBT, 29 Km from Shimla airport. The Grand Welcome is the only hotel in the Shimla city which is drive-in with the capacity of 100 cars. The Grand Welcome is one of the prime locations Property, just 106Kms/3hrs drive away from Chandigarh. Spread over 2 Bighas of area with beautiful green Hills, the hotel offers unique blend of fine hospitality and fast and best services. Our 4 Star Amenities give us a distinctive edge over the other hotels in Shimla.

Clarkes Hotel, Shimla

Located on Shimla's Mall Road, Clarkes Hotel is an oasis of calm on the bustling promenade. Built in 1898, Clarkes is classed as a Grand Heritage Hotel and is one of the oldest hotels in Shimla.

Clarkes Hotel embodies the elegance and charm of yesteryear, with all modern conveniences and world class service. Clarkes Hotel is just 10 minutes by car from Shimla Railway Station and is within walking distance of Shimla attractions - Gaiety Theatre, Gorton Castle, Rothney Castle, many churches and other colonial era buildings.



Sachida Cottage, Manali

We introduce ourselves as one of best luxury cottage in Manali. We are located just 1.5 kms before Manali on Kanyal Road at Rangri, away from the hustle and bustle of Manali town. Sachida Cottage offers a wonderful stay in the midst of all the serenity.

With rooms decorated with all the modern amenities ranging from LED TVs to 24 Hours Hot/ Cold Water supply, you get a direct view of the legendary Himalayan peaks sprinkled with snow and apple orchards till they disappear over the horizon. It provides guests with an ultra comfortable stay backed with world class services along with spectacular views of the panoramic Himalayas and green valleys.

Radisson Blu Resort, Dharamshala

Surrounded by breathtaking valley views and crisp mountain air, the Radisson Blu Resort Dharamshala invites you to explore the majestic Himalayas. This luxurious hotel is nestled at the foothills of the scenic Dhauladhar Himalayan range, just a 30-minute drive from Gaggal Airport and with easy accessibility from both Punjab and Delhi. The resort is well-situated to explore all popular places of interest in and around Dharamshala. Trek through the mountains to visit one of the many monasteries and temples, find local goods at Kotwali Bazaar, and discover your new favorite tea in the gardens of Sheela Chowk.



Amoha Retreat, Dharamshala

Not far from the Gaggal airport in Dharamshala, set in the heart of the Kangra folklore, close to the home of his Holiness the Dalai Lama, rests an opulent picturesque resort passionately built to perfection with sustainable local materials and in oneness with nature.

Serene and besieged by the beauty of the land and the snow-capped Dhauladar mountain ranges beyond, it promises to offer the wandering souls a welcome refuge from the hurly-burly of city life. Breathtaking locales, pristine water bodies, soulful melodies of Mother Nature in the lap of the tranquil foothills and a breath of fresh mountain air tell an inspiring story like none other.



Woodsmoke Resort and Spa, Shoghi

There is a games room on site and guests can enjoy the on-site restaurant. Free WiFi is featured throughout the property and free private parking is available on site. The rooms are fitted with a flat-screen TV.

Certain units feature a seating area to relax in after a busy day. Certain rooms have views of the mountains or garden. Each room is fitted with a private bathroom. Extras include slippers and free toiletries.





The Oberoi Sukhvilas Resort & Spa, Chandigarh

Against a backdrop of the 8,000 acres of Siswan Forest Range and the foothills of the Himalayas, The Oberoi Sukhvilas Spa Resort presents a landscape of beautiful gardens with fountains, reflection pools and traditional architecture. The best hotel in Chandigarh offers the perfect environs for you to switch off, relax and take some time out. Listed as 'One of the World's Greatest Places' by TIME Magazine in 2018, our five star hotel: The Oberoi Sukhvilas has been carefully designed with your utmost comfort in mind.



The Baradari Palace, Patiala

Looking for hotels in Patiala? A sprawling garden-palace in the heart of culturally-rich Patiala, this 19th-century architectural marvel is a heritage hotel restored by the Neemrana group that you can now discover! This heritage hotel in Patiala has created another niche whereby you can experience history and as also its architectural treasures in Punjab. This Palace hotel in Patiala is situated near the railway station. If the Patiala peg spells quantity – then in the same tradition, The Baradari Palace is one of the few heritage hotels in Patiala and hotels in Punjab that speaks volumes on hospitality and space!



Taj Swarna, Amritsar

Taj Swarna, Amritsar embodies the best of Punjab's iconic history, art and culture. Fusing modern design with traditional elegance, our 5 star hotel in Amritsar is a stylish, contemporary world class hotel, basking in an enviable location that serves Amritsar and the adjoining cities of Jalandhar and Ludhiana.

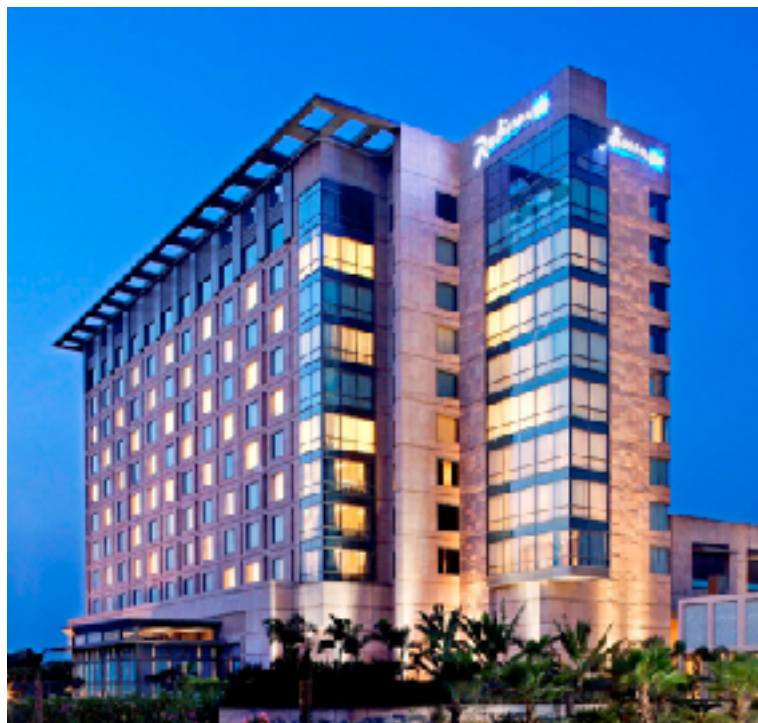
The hotel features spacious rooms, an array of dining options, sophisticated meeting facilities, Health Club, Jiva Spa and Salon and is close to the main shopping area of the city.

Radisson Blu, Ludhiana

Choose the Radisson Blu Hotel Ludhiana for deluxe accommodations and a convenient location in the largest city in the Indian state of Punjab.

Situated off Ferozepur Road, our hotel is five kilometers from the Feroze Gandhi Market, home to the city's financial center, the stock exchange, and more than 400 corporate offices.

You can quench your desire for upscale shopping at the adjoining MBD Neopolis mall or check out local culture at Ghumar Mandi Market, less than 15 minutes from the hotel by car.



Radisson Blu Hotel, Amritsar

Surrounded by lush, manicured grounds, yet across from Sri Guru Ram Dass Jee International Airport (ATQ), the Radisson Blu Hotel Amritsar provides guests with a convenient oasis outside the city bustle. If you're here to see the Golden Temple or explore the city center, we offer complimentary shuttle service to both. Need to stay in touch with the office?

Free Wi-Fi and a business center with printing services make it easy to finish work while you're away.

Hyatt Regency, Amritsar

Hyatt Regency Amritsar is a 5-star Deluxe hotel of the city with an inventory of 248 rooms, located at a distance of 4.2 kms from the world-renowned Golden Temple.

We provide complementary shuttle services to the Golden Temple. Hyatt Regency Amritsar is a 30 minutes' drive from the Guru Ram Das International Airport.

The hotel is also right adjacent to the Mall of Amritsar on GT road. The location of the hotel makes it the most convenient for leisure travellers across.





Hyatt Regency, Ludhiana

Epitomizing North India's artistic traditions, Hyatt Regency Ludhiana is one of the first finest 5 star hotels in Ludhiana- the cultural capital of Punjab.

Our hotel is located off the Chandigarh-Ferozepur Highway 95 and is just 8Kms from Ludhiana Junction and 21kms from Sahnewal Airport.

The location of the hotel makes it the most convenient hotel for business and leisure travelers.

The Kikar Lodge, Ropar

If you want to experience warmth, comfort and adventure all in one location, head to The Kikar Lodge. Nestled in the Shivalik foothills at the northern periphery of the State of Punjab, The Kikar Lodge is India's First Private Forest Reserve spread over 1800 acres of forest, a secluded haven of luscious green splendour.

All the tastefully appointed rooms and cottages are equipped with comfortable facilities such as LCD TV, writing desk, built in cupboards, mini-refrigerators, 24 hour power back-up, tea & coffee makers, and attached bathroom with all amenities.



WelcomHotel by ITC, Amritsar

Spread across eight acres, Welcomhotel Amritsar exhibits a unique blend of vintage architecture & endless serenity with sophisticated facilities, amid tranquil surroundings.

Located close to the airport and a short drive from the revered Golden Temple, the hotel is built around a colonnaded mansion, the erstwhile Sandhanwalia Haveli, which traces its origins to the 1900s and has been lovingly restored to preserve the cultural, architectural and culinary nuances of that era.

Courtyard by Marriott, Amritsar

A centrally and safely located hotel in the Punjab, India city center, Courtyard Amritsar offers easy access to the Sri Guru Ram Dass Jee International Airport, 9.8 km away and the Amritsar Junction Railway Station, five km away.

Our 5-star hotel features modern, comfortable rooms with luxurious bedding, fascinating artwork, contemporary furniture and complimentary Wi-Fi.

Upgrade your stay to one of our sophisticated hotel suites, ideal for families traveling to Amritsar, India. If a meeting, social event or wedding brings you to Punjab, you'll be delighted with our sophisticated spaces, expert services and custom catering.



Park Plaza, Ludhiana

Park Plaza Ludhiana offers an ideal downtown location in the heart of the city's business district. After a day of meetings, visit popular nearby attractions like the beautiful Nehru Rose Garden or Guru Nanak Bhawan, a vibrant shopping and entertainment complex. Our hotel provides easy access to transportation with Ludhiana Junction railway station only two kilometers away and Sahnewal Airport (LUH) 18 kilometers away.

When you're ready to relax, lounge by the outdoor pool or visit the expansive fitness center, which includes a sauna, a steam room, and six indoor hot tubs.

Welcome Heritage Ranjit Vilas, Amritsar

Ranjitvilas is a joint venture of four family members of Late S. Ranjit Singh Makhni who dreamt of making his grandchildren stay together in a authentic punjabi farm house. It was his last wish that his future generations should not forget the taste of punjabiyat and richness of punjab heritage. So Ranjitvilas make his dream come true, this concept was made by his family. A centrally located true Punjabi heritage vintage experience awaits you in Amritsar, Punjab, India at this aesthetically done property Ranjit, spread over 1.5 acres of a farmhouse.



Shimla - The Capital

Also known as the 'Queen of Hills', Shimla is a picturesque hill town nestled at an altitude of 2205 metres in the enchanting state of Himachal Pradesh. Enveloped in a pristine scenery of majestic Himalayan peaks and mystical forests of oak and pine, it has always been on the radar of travellers from all walks of life. Whether on a honeymoon, a cultural escapade or simply a relaxing holiday, Shimla is sure to leave you with some unforgettable memories to cherish for life.



Dharamshala





Lahaul & Spiti Valley

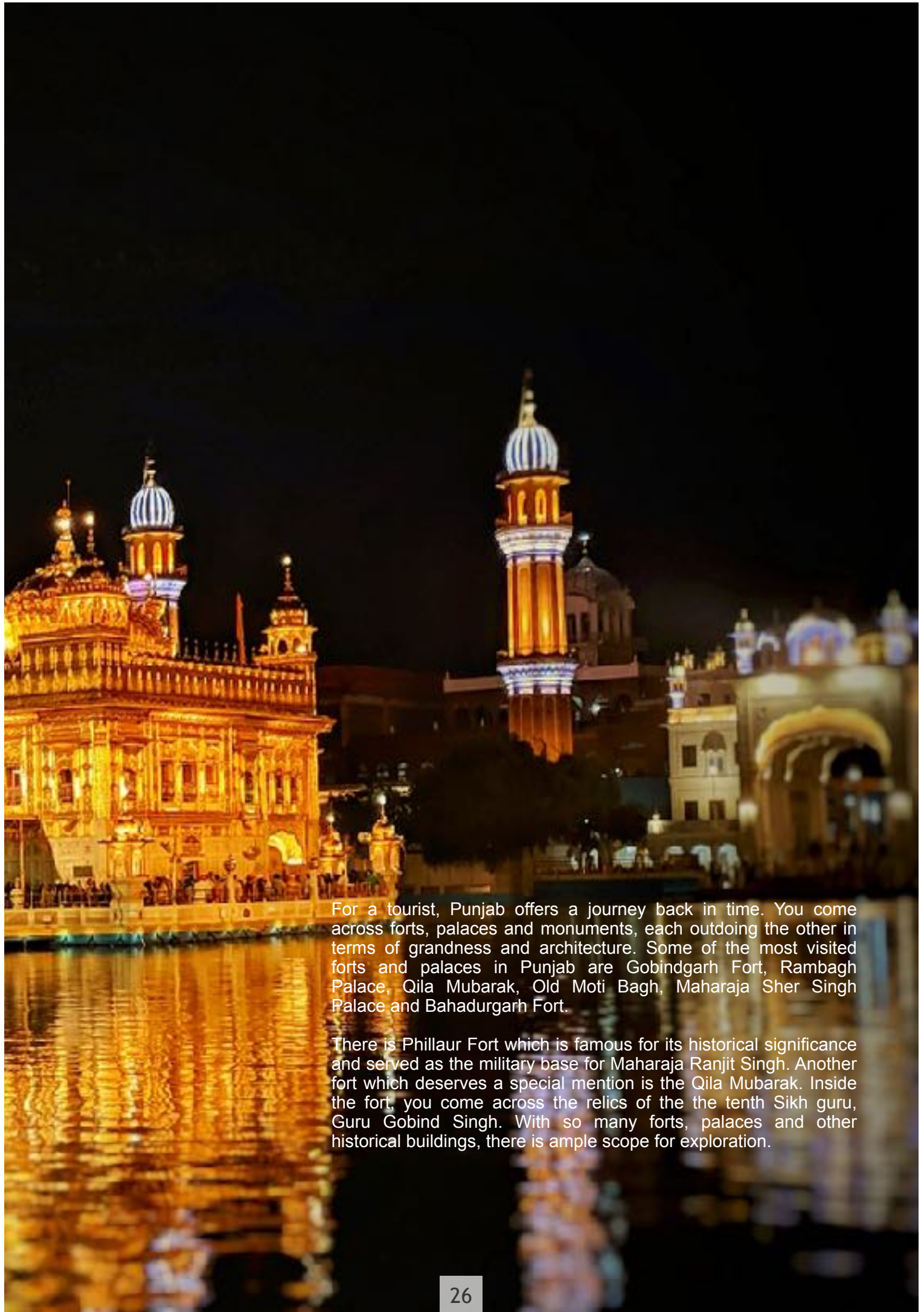




Amritsar - Punjab

Visit Punjab, and you will see that the large heartedness of the people is as real as their cuisine. You learn a lesson in universal brotherhood at the Golden Temple, one of the most popular tourist places in Punjab. The eyes well up at Jallianwala Bagh, a top most historical destination, while its palaces and museums reflect its past glory. A travel experience in Punjab encompasses culture, heritage, history and wildlife.





For a tourist, Punjab offers a journey back in time. You come across forts, palaces and monuments, each outdoing the other in terms of grandness and architecture. Some of the most visited forts and palaces in Punjab are Gobindgarh Fort, Rambagh Palace, Qila Mubarak, Old Moti Bagh, Maharaja Sher Singh Palace and Bahadurgarh Fort.

There is Phillaur Fort which is famous for its historical significance and served as the military base for Maharaja Ranjit Singh. Another fort which deserves a special mention is the Qila Mubarak. Inside the fort, you come across the relics of the the tenth Sikh guru, Guru Gobind Singh. With so many forts, palaces and other historical buildings, there is ample scope for exploration.

FXPI ORF



Kullu Manali

A trip to Kullu Manali is the medicine for fatigued minds and tired souls. Nature has blessed them generously, and yet, one is different from the kind of experiences they offer. Kullu is called the “land of the gods”, and quite aptly so. Stretched out leisurely on the banks of the River Beas, it is blessed with a magnificent scenery characterized by forests, valleys, streams, rivers and orchards.

Mystical Malana to serene Manikaran, it lures tourists for many reasons. The town of Manali is seated comfortably in the River Beas Valley, and its popularity has increased faster than the clouds that dance on its hilltops. Wonderfully combining nature and adventure, it is serenity, history, nature, spirituality and shopping, all merged into one. Holidays in Kullu Manali then, is about sightseeing, but it is also about adventure, spirituality & being prepared to be constantly surprised.



Dalhousie

Netaji Subhash Chandra Bose was won over by the beauty of Dalhousie, a famous tourist destination in Himachal Pradesh, so much so, that he stayed here for many months in 1937. Today, he has two places named after him - Subhash Baoli and Subhash Chowk. The hill station has the same effect on tourists today, with its waterfalls, rivers making their way through mountains, dense forest trails that run parallel to enormous cliffs with grand views of Dauladhar range in the distance and a couple of churches that were built during the British Raj. Cafes, market, Mall Road, those are equally convincing reasons to plan a trip to Dalhousie.



Khajjiar

It is not difficult to understand why Khajjiar is often referred to as the mini-Switzerland of India.

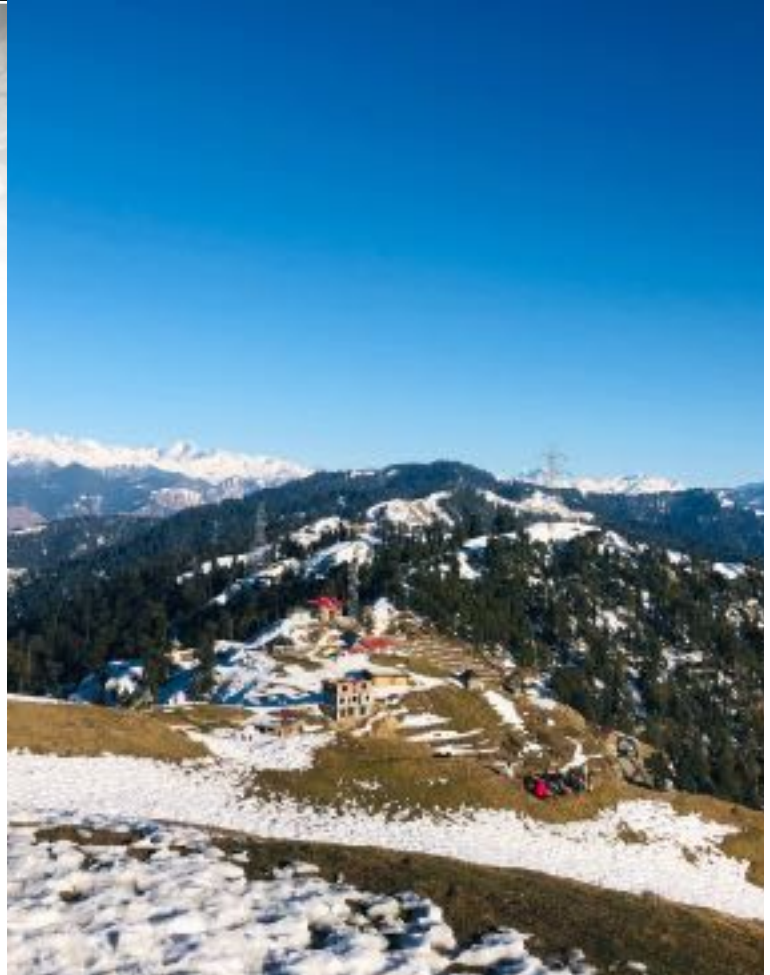
The wide grassy areas that meet dense forests of deodar and cedar forests, with cottages dotting them at occasional intervals, lend them an appearance similar to the Swiss countryside. If you have seen similar landscapes in movies and magazines, and wished there was such a place closer to home, well, here it is.

You can choose to drive during your trip to Khajjiar, but you would be missing a lot of the fun than if you were trekking from Chamba. The beauty that marks the route is well worth the time and effort.

Chamba

Chamba is the northernmost district of Himachal Pradesh, and lies at the intersection of Dhauladhar and Zaskar ranges. These are facts related to this district, but aren't particularly interesting. What is interesting is the opening lines of a famous Himachali folk song which go like this - Shimla nahi basna, Kasauli nahi basna, Chamba jana zaroor. When translated, they mean - Don't settle in Shimla, don't settle in Kasauli, but certainly visit Chamba. It is only when you spend your holidays in Chamba that you realise the significance of the song.

The landscape here is marked by lakes, streams, meadows, alpine tree covers, valleys and rich wildlife. There are historical attractions, and architectural ones. The main town is located on the banks of the River Ravi, and is surrounded by mountains with dense forests. There are numerous opportunities for sightseeing, thanks to its illustrious past. It is the culture of Chamba though, that leaves you fascinated.



Chail

An idyllic hill station that was discovered by the banished Maharaja of Patiala, Bhupinder Singh in 1893, Chail is one of those tourist places in Himachal Pradesh where the peace of mind is guaranteed. With the establishment of a wildlife sanctuary and a polo ground, this secluded hilly destination was transformed into a scenic place of interest. Today, Chail is one of the most popular tourist destinations in Himachal Pradesh. This magnificent Himalayan abode also boasts being home to the world's highest cricket ground, at an elevation of 2444 meters.

As a much sought after hill destination in Himachal, Chail offers many sightseeing places and activities for its visitors to keep them engaged. This scenic place is ideal for family holidays as well as for planning a honeymoon. A nature lover would be more than happy to spend some time here appreciating the splendid beauty and quietness of the place.



Kufri

Kufri is derived from the word 'Kufri' which literally translates to 'Lake' in the local language. Discovered by the British in 1819, Kufri is a popular tourist attraction near Shimla due to its breathtaking Himalayan charm and adrenaline rushing skiing opportunities. The surrounding verdant forests of cedar trees add to the rustic charm of this place. Situated at an altitude of 2743 meters, Kufri is a haven for nature and adventure lovers.

Kufri offers tourists the chance to connect with nature and spirituality at the same time in its enchanting Nag Temple, situated at the Mahasu Peak. The breathtaking views of the holy Kedarnath and Badrinath ranges from this peak, also considered as one of the highest points of Kufri, is something you will not forget for a lifetime. This hill station in Himachal Pradesh also boasts Chini Bangla, the residence of the former prime minister of India, the late Ms. Indira Gandhi done in the colonial era design.



Kalpa

Kalpa is a picturesque little village in the Kinnaur district of Himachal Pradesh. Surrounded by the towering mountains and glittering peaks of the Kinnaur Kailash range & boasting an unperturbed environment, Kalpa is a paradisiacal destination for nature lovers. With its Buddhist Monastery and Hindu temple, this humble abode offers you the perfect opportunity to seek your spiritual enlightenment in the lap of the Himalayas. In Kalpa, treat your eyes to the different sights of the Mount Kailash, Mt. Raldang, and Jorkanden and if you are lucky, you may get to witness the holy Shivling, situated atop the sacred mountain, and the visual spectacle of its changing colours throughout the day.

A small offbeat destination that it is, Kalpa doesn't boast many tourist attractions. There is constructed in the traditional Tibetan Pagoda Architectural style, the ancient and revered Narayan Nagini Temple in Kalpa. This temple is considered as the perfect example of Kinnauri Art and Craftsmanship. Then at the close proximity to the temple is the Hu-Bu-Lan-Kar Monastery.

Sangla

Sangla literally translates to 'Pass of Light' in the Tibetan language. Carrying a rich Tibetan influence, this scenic town delights tourists with its mesmerizing Himalayan Mountains, thick oak and pine forests, majestic glacier streams and the pristine Baspa River flowing through the valley.

Sangla is inarguably a destination for nature lovers who can relish the tranquility and pristine environment of this offbeat destination in Himachal Pradesh. One of the top sightseeing spots in Sangla is the Kamru Fort. Dedicated to the Hindu Goddess Kamakshi, this fort converted into a temple is an architectural marvel and an artistic delight. The deity Kamakshi is positioned on the third floor of the temple.

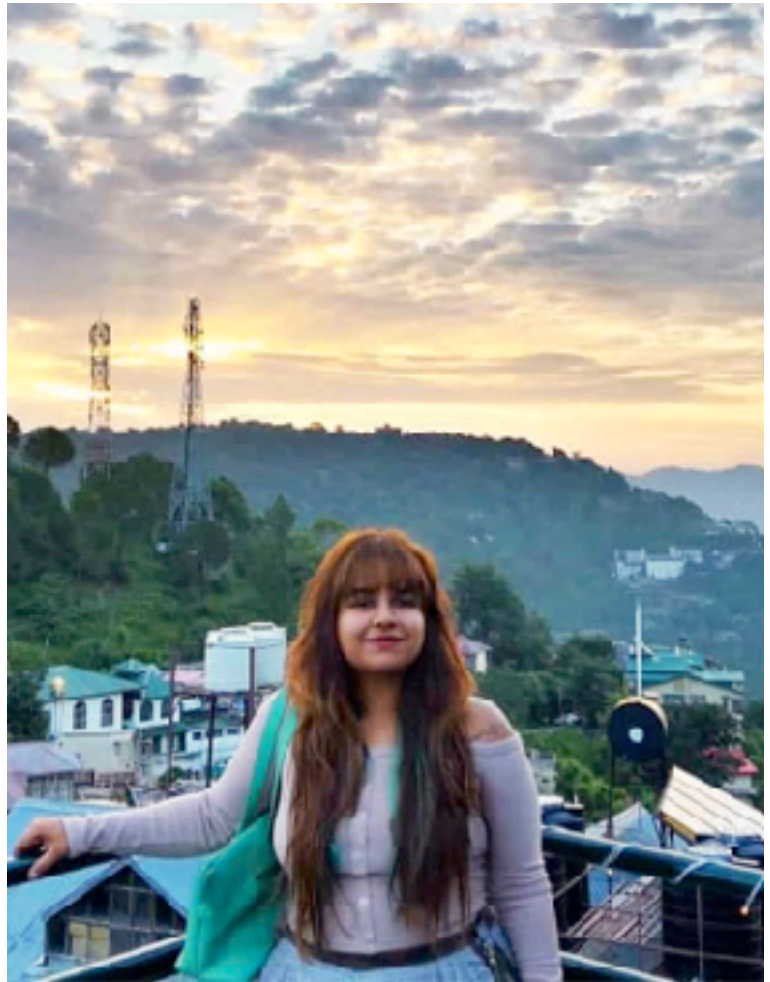
Another popular temple of Sangla is the Bering Nag Temple. Dedicated to the Lord Jagas, the Bering Nag Temple is a popular tourist attraction and a place of great religious significance.



Kasauli

Nestled in the lap of the Dhauladhar range of the Himalayas, Kasauli is an ideal destination for those looking to spend some time away from the hustle and bustle of cities. Once a favourite summer retreat of the British, Kasauli boasts some of the most exquisitely designed colonial era architectural marvels. Adorned with foggy lanes, cobbled roads, beautifully designed avenues and blooming gardens, Kasauli will delight you at its every corner with its old-fashioned ambience. Being the birthplace of Ruskin Bond, Kasauli is the dream destination for readers and writers who can find tons of inspiration amidst its pristine beauty and peaceful ambience.

Kasauli is an ideal destination for hiking. The amazing Gilbert trail which originates from this place has rich flora and fauna making it a nature lover's paradise. If you want to enjoy the old-world charm of this place, then look no further than the Mall Road.



Nahan

Untouched by the chaos of civilization, Nahan delights tourists with its calm and unadulterated environment, secluded location and verdant scenery. Situated at an elevation of 932 meters, this cantonment town is in the Sirmaur district of Himachal Pradesh. The capital of the erstwhile princely state of Sirmaur during Colonial Rule, Nahan was a major agricultural town. Its rich agricultural heritage can be seen even today.

According to the local legend, the town gets its name from a saint who used to live here with a lion (nahar). Nahan boasts being a sacred destination with many temples in and around it.

The Trilokpur Temple, dedicated to the Goddess Mahamaya Bala Sundri, is a popular pilgrimage site in Nahan. Built in 1573 A.D. by Raja Dip Prakash, this holy site is situated at a distance of 23 km from the main town. Witness the grand fairs organized in this temple during the Navratras in April and October.



Naldehra

Nestled amidst the lofty Himalayan Mountains and fringed by the verdant forests of cedar and deodar, Naldehra is a stunning hill station and one of the best travel destinations in Himachal Pradesh. With its beautiful golf course, green rolling Himalayan Mountains and sparkling Sutlej River meandering through the valley, Naldehra resembles a painting on a canvas. This tiny pristine destination derives its name from the words, Nag and Dehra which when combined literally translates to 'The Abode of the King of Snakes'.

Naldehra was discovered by the erstwhile British Viceroy Lord Curzan. He was so impressed and mesmerized by the charm of the place that he decided to build a massive golf course here. Today, the 18-hole Naldehra golf course is one of the finest and most renowned golf courses in India and a popular tourist attraction.



Parwanoo

Nestled amongst the lower hills of the Himalayas, Parwanoo is a popular destination in Himachal Pradesh that promises a peaceful holiday away from the chaos and noise of cities. Situated at an elevation of 760 meters, Parwanoo is indeed the gateway to the Himalayas. It is one of few towns of Himachal Pradesh which remained untouched by the paws of colonial rule. After the state of Himachal Pradesh was formed, Parwanoo quickly became a prosperous industrial town and today, this town is renowned for being home to the biggest wholesale market of Himachal Pradesh.

Nestled amidst the majestic Shivalik Range, Parwanoo is a place where you can relax and rejuvenate your body, mind, and soul. This tourist destination adorned with the best of nature is home many pretty places that make for a nice sightseeing tour. The Timber Trail is amongst one of the top attractions in Parwanoo. A perfect retreat, this beautiful resort is accessed by a cable car which boasts excellent panoramic vistas of the Himalayan landscapes.



Mashobra

Nestled in the lap of the Himalayas, at an altitude of 2246 m, Mashobra is a quaint little hill retreat located in the Shimla district of Himachal Pradesh. Bestowed with an alluring beauty peppered with gurgling streams, captivating fruit orchards and lush oak forests, it counts amongst the most idyllic destinations to spend some peaceful time soaking in the tranquil environs of Mother Nature.

The beautiful hill town is a place that makes for a splendid attraction for history buffs, spiritual travellers, and culture seekers too. For those looking for some adventure, hills in Mashobra are indeed replete with a number of offerings to satiate their adrenaline cravings.

A visit to Mashobra is incomplete without indulging in its exotic shopping experience. The 'Tibetan Handicraft Market' is known for its fancy and beautifully crafted Tibetan jewellery, good quality woollens at affordable prices and a variety of souvenirs to take back home.



Solan

Solan is a small little hill town located on the foothills of Himalayas at an elevation of about 1600 metres in the enchanting North Indian state of Himachal Pradesh. Extensive mushroom farming, aptly nicknames this little town as the 'Mushroom City of India'. Well that is not all! Solan is also the largest producer of tomatoes in the country and that is the reason it is also popularly called the 'City of Red Gold'.

Captivating scenic beauty dotted with snow-capped hills, lush meadows, fascinating forest trails and expansive mushroom plantations is what makes this tiny hamlet a delight for nature lovers and soul seekers alike.

Go for some leisure strolls on winding roads, witness raw nature, pick some tomatoes from the farms, listen to the chirps of birds, or just sit back and relax in your hotel balcony sipping some hot tea, and you are sure to find that profound peace and solace which is now somehow lost in today's busy lives.



Mandi

Often called the 'Varanasi of Hills', Mandi is a picturesque hill retreat nestled on the banks of River Beas in Himachal. Spellbinding scenery, spiritual vibes and a fresh breath of air, is what that makes this little town one of the most sought after destinations for honeymoon couples and pilgrims.

Adorned with some rugged terrains that hide in their store, an amazing wildlife, and trails to explore, the place is undoubtedly a wildlife and adventure lover's paradise. That is not all, this tourist place in Himachal Pradesh is ideal for cultural exploration and uncovering hidden cultural treasures and unveiling its fascinating past.

Needless to say, Mandi is a hill retreat that will always surprise you with its exotic wildlife; whether a nature enthusiast, a wildlife photographer or an avid bird watcher, you are sure to be treated with one of the most spellbinding wildlife spectacles of your life.

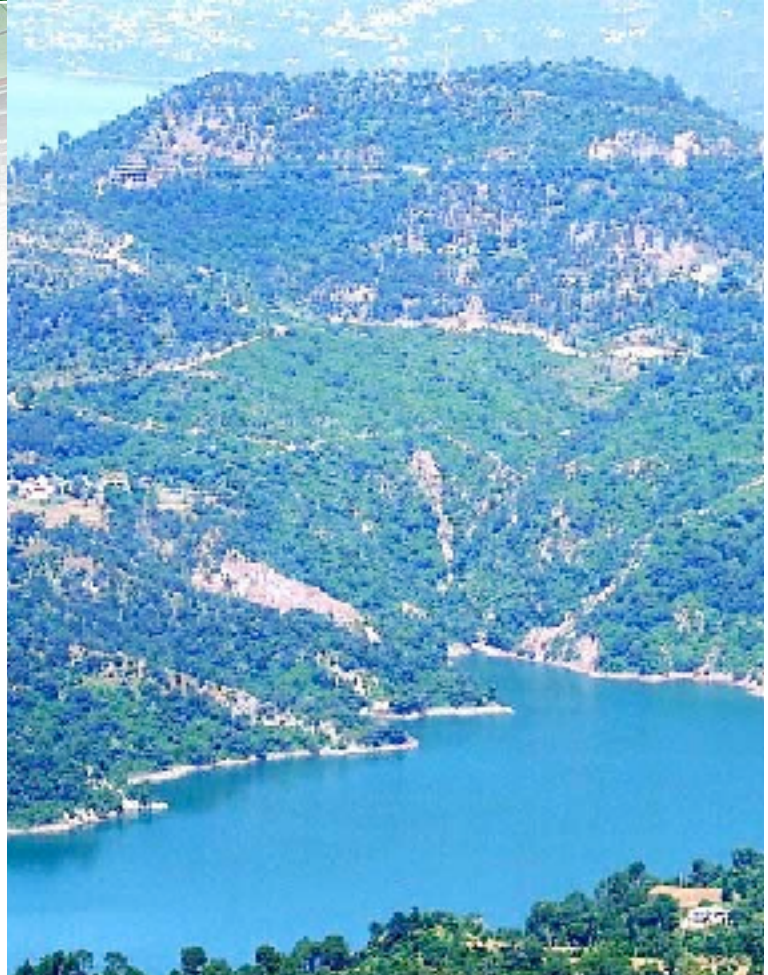
Bilaspur

Nestled amidst the majestic Himalayan mountains in Himachal, Bilaspur is a quaint hill resort known for its resplendent natural beauty.

Blessed with a quiet seclusion coupled with serene and tranquil settings, it often finds its place on the list of unconventional honeymoon destinations in the state. Additionally, the city is replete with a number of religious attractions, historical monuments, scenic landmarks and adventure activities that make it one of the most ideal holiday destinations for travellers.

Those who love exploring historical sites, are definitely going to have a wonderful time in Bilaspur. The town is replete with a number of forts that leave the travellers with a great insight into the times gone by.

Amongst these ancient marvels, Fort Kahlur and Fort Bachhretu sitting on the outskirts make for the two significant historical sites.



Hamirpur

Sitting near the banks of River Beas, Hamirpur is one of the lesser explored destinations in Himachal. The place is named after the famous ruler of Katoch Dynasty, Raja Hamir Chand who reigned the region between 1700 and 1740 AD. Dotted with serene spots and captivating vistas of enchanting scenery, no wonder, the quaint little hill resort is rightly christened as a nature lover's paradise. Majestic mountains, utmost serenity, tranquil aura and an endless adventure is what makes Hamirpur a delight for every traveller.

Hamirpur holds the reputation of being a prominent religious centre in Himachal. The town is peppered with a number of temples and shrines. The Deotsidh Shrine, also called the Cave Temple of Balak Nath in Hamirpur is its most sought after religious attraction. The famous Jwala Devi Temple, one of the sacred 51 Shaktipeeths of Goddess Sati, also lies in the close vicinity and makes for a must-visit destination for devotees and tourists alike.



Kangra

Kangra is the place for all those who are looking for rejuvenation and relaxation. The vistas of the city are mystic and simply mesmerizing. Kangra is a small hill station perched at very a high altitude. All thanks to its cultural and historical significance, the hill station is visited by numberless people from across India.

The history of Kangra valley dates back to the Vedic times, more than 3500 years ago. Once upon a time, Kangra was home to the world's oldest serving Royal dynasty- the Katoch.

The town was also ruled by some great invaders like Mohammed Ghazni in the 11th century, Mohammed Bin Tuglaq in 1337, Raja Purab Chand in 1351 and finally, after the first Anglo-Sikh War it was acquired by the British people.

Despite the blitz and political turmoil's, the region has continued to develop and flourish.



Kinnaur

A region of rugged beauty, Kinnaur is a wonderland where rivers flow through the plunging Himalayan gorges. The crisscrossed roads of the old Hindustan–Tibet highway will take tourists to this hidden village called Kinnaur.

It is a tiny hamlet in India where beauty resides and that is why it is acknowledged as the "Land of fairy tales." Sharing its eastern border with Tibet, Kinnaur has noticeable resemblance with Tibetan culture. The hilltop is guarded by three famous hill ranges- Zaskar, Himalaya and Dhauladhar. The terrains of Kinnaur create a spell which encourages all the adventurers to dive into this magic.

To one's astonishment, there is only one road which connects Kinnaur with the rest of the India, although the road remains closed for half of the year. This highway along the bank of river Satluj offers stunning views and sightseeing options to keep tourists engaged and enthralled throughout the journey.



Palampur

Surrounded by a large number of slopes of emerald green tea plantation and set against the backdrop of the dominating Dhauladhar ranges, Palampur is nestled away in the north-west region of Himachal Pradesh. The city derives its name from the term 'Pulum' which in local language means "lots of water." Reckoned as the 'The tea Capital of North India,' Palampur is a major center for tea production. Palampur is sprinkled with the eloquent art galleries, paddy fields, and ancient shrines.

An erstwhile retreat of the British people, Palampur is a small, offbeat destination nestled amidst the foothills of Dhauladhar range. Palampur carries the legacy of being a tea estate since the 18th century, when the British ruled India. Since then, Palampur has achieved international fame for its tea plantation. The countryside is layered with multiple layers of tea estates, but the oldest and the most famous amongst them is the Bundla Tea Estate complex which has existed for 200 years.

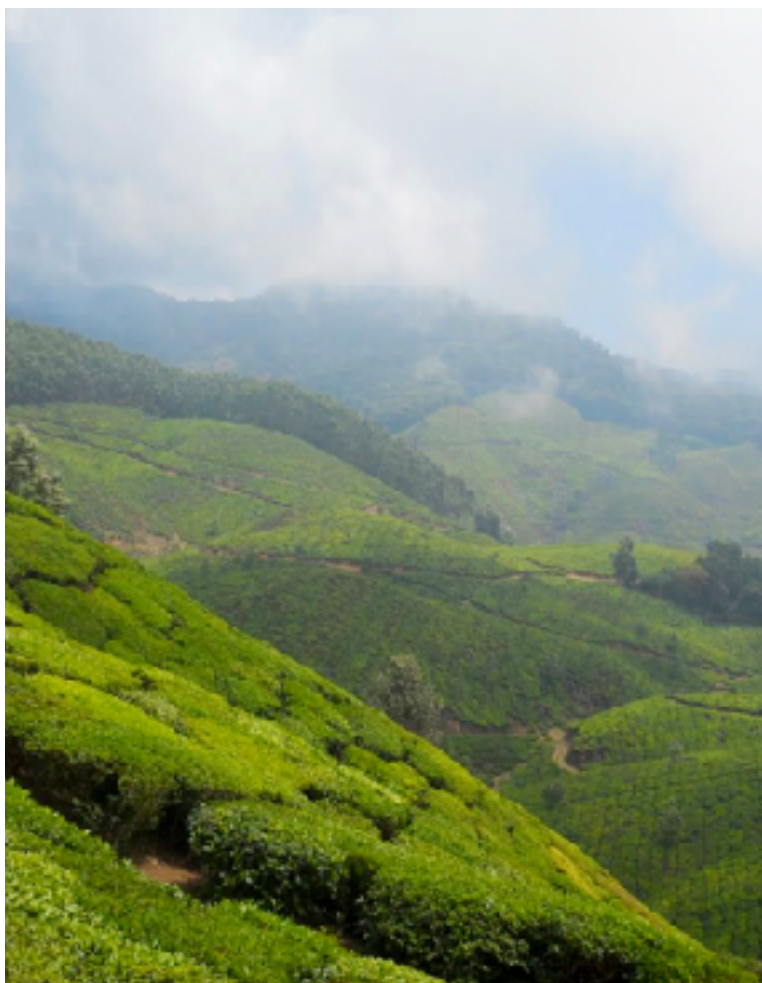


Paonta Sahib

The zig –zag roads and high –altitude hiking trails of Himachal Pradesh lead to a fantastic pilgrimage site where stories from the Sikhs epics are set: Paonta Sahib. It is the holiest Sikh shrine in Himachal Pradesh; pilgrims arrive here to pay reverence to the tenth Sikh Guru, Guru Gobind Singh and the Sikh leader Banda Bahadur. The holy town is located on the boulevards of the river Yamuna in Sirmour district of Himachal Pradesh.

On a religious trip to Paonta Sahib, tourist can explore the Paonta Sahib Gurudwara, Gurudwara Shergarh Sahib, Assan Lake and many ancient temples.

The main attraction of the religious town is the Paonta Sahib Gurudwara. It is the place where Guru Gobind Singh wrote the pious Dasam Granth. The Gurudwara got its name either from the facts that Guru Gobind Singh ji set his foot here or just because he lost his ornament in the River Yamuna which he used to wear on his feet.



Una

Located in the rugged mighty mountains, Una is the place where tourist shall encounter the divine presence of God. Una is a cultural and religious hub, which has been hidden away in the lush green hills of Himachal Pradesh for a long time.

The name 'Una' which in Hindi means 'Unnati' was given to the town by Shri Guru Arjan Dev, the fifth Guru of the Sikhs. The district of Una was carved out of the Hoshiarpur District of Punjab in 1972.

Moreover, Una is renowned for a pious shrine devoted to the Hindu Goddess Chintpurni. The temple is one of the most important Shakti Peethas, dedicated to the supreme Goddess Shakti. The main deity of the temple, Goddess Chintpurni is placed in the temple as a stone idol, which is also known as Pindi. Thrice a year, Chintpurni Fair, also known as 'Mata da Mela' is organized in Chintpurni Village.



Churah

Less traveled and lesser known, the rural charm of Churah valley of Chamba is a discovery for those on the lookout for offbeat destinations. Given to a slow pace of rural life, the religious beliefs, customs and festivals are centered around the temples. Famous temples of region include the Chamunda Devi temple at Devi Kothi and the Bhadra Kali temple at Bhalei.

Tissa is the sub-divisional headquarter for Churah. Well connected by road with Chamba and Dalhousie, it also connects up with Kishtwar region of Jammu in one loop and with Pangti valley in another. Tissa abounds in good trekking trails, especially those to the glacial lakes of Ghadasru, Mahadev Dal, Mahakali Dal, Maral Dal and Mehalwar Dal.

The 27 km route from Tissa to Bairagarh is a tough drive. The highpoint on the route is the Sach Pass at 4428 meters before it descends into Chenab valley to meet the Tandi-Kishtwar road at Killar. This stretch of the road usually becomes snowbound in late November and again opens up in July.

Pangti Valley

The land across Sach Pass (4414 meters) is Pangti, a valley full of grandeur and tribal majesty. The native Pangwals and Bhotis are a robust hardworking, handsome people, who keep the valleys unique culture alive in folk songs, music and tribal dances.

Spread over an area of about 1600 sq kms of steep, rocky and tough Himalayan terrain, Pangti is an offbeat and challenging tourist destination. Consisting of Saichu, Hudan, Bhatori and Surai Bhatori valleys that have only recently been opened up for travel as roads penetrate the area. Much of it still has to be covered on foot. Killar, 27 kms from Sach Pass, is the sub-divisional headquarter of Pangti. From here there are a number of exciting and challenging treks to Keylong and Kishtwar in Jammu.

Those headed for Pangti should be travelling in a sturdy off-roading vehicle, be equipped with good quality travelling gear, have spare tyres, food rations, extra gallons of petrol/diesel and need to carry emergency medicines.



Shoja

Scattered wilderness, meditative silence and the sheer raw beauty of Shoja quenches the desire for a quiet mountain holiday. Aesthetically built houses set among apple orchards with wide view of the valley have travellers revisit the place year on year.

Often missed by the Manali and Kullu-goers, this hidden gem is one of the best weekend retreat that nature can offer in the valley. Shoja is also the base for easy treks to Jalori Pass, Serolsar Lake, Takrasi and Khanag.

This quaint hamlet is slightly off the main road from the Kullu-Ani road that goes over Jalori Pass. It can be reached from Shimla and Kullu.



Janjheli

Vast green pastures, captivating views of snow clad ranges and untrodden terrains of Janjheli are fast taking their place on a traveller's itinerary. The farms and orchards spread over gentle slopes with mighty deodar (Cedar) and oak forests scaling the heights give Janjheli a lively charm.

It is a trekkers delight and serves as a base for several trekking routes in Seraj valley, to places like Shikari Devi, Kamrunag, Chindi, Karsog and Shoja that are in easy reach from the valley.

The 15 km trek to Shikari Devi, the highest mountain of the area is a very popular with day hikers. The mountain top destination has a roofless temple where snow does not accumulate even when the surroundings are pounded with a heavy snowfall.

Janjheli can only be reached by road and is 85 km from Mandi.



Karsog

Some of the most well known temples built in the indigenous hill architecture style are in Karsog valley. One of the rare but highly revered temples is that of Kamaksha Devi. The stone and wood structure with tiered slate roof makes the temple an architectural gem. Other important temples are that of Mahunag and Mamleshwar Mahadev, which has an eternal flame that has been kept burning for centuries. These temple exhibit some very fine wood carvings and reliefs that display skills of the of local craftsmanship.

Karsog valley makes for a quiet getaway. The countryside, laden with apple orchards adds to the places scenic value. During the rainy season, from July to September, well irrigated fields growing a paddy crop in the valley is a beautiful sight to behold.

Karsog can be easily reached from Shimla via Tattapani and from Mandi. It is 125 km from Mandi and 106 km from Shimla.

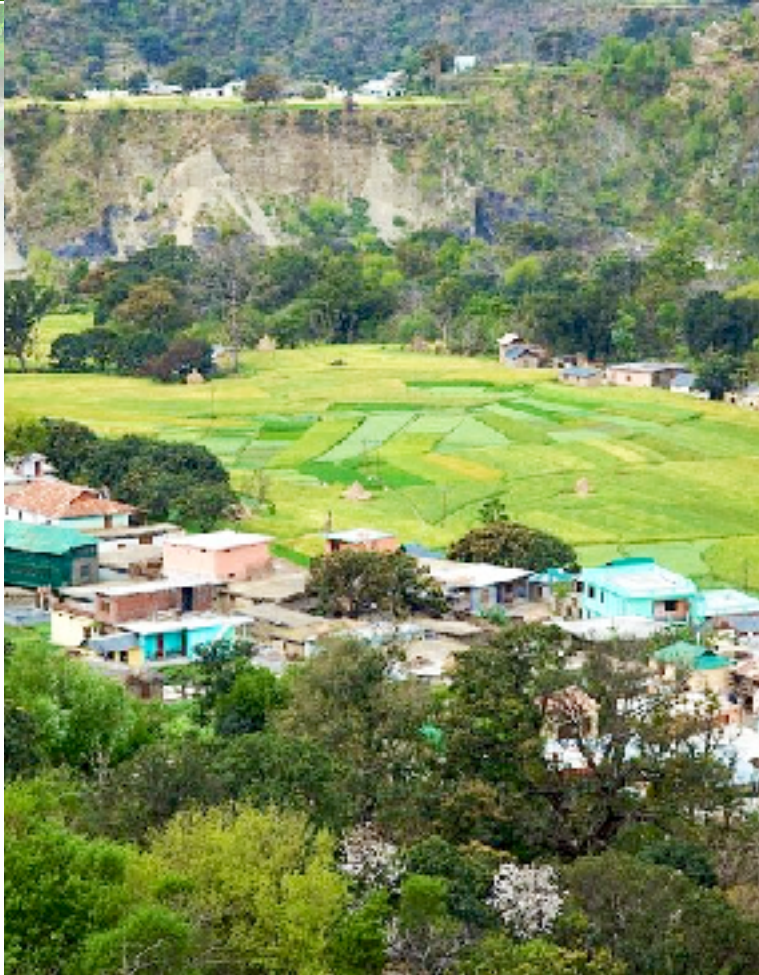


Chindi

A quiet and less explored hill station, Chindi with its rural charm of apple orchard lands, exquisite stone and wood temples with slate roofing built in traditional hill architecture style and deep forests around is a nature lovers paradise. The place has some nice staying options and even Himachal Tourism has a hotel at Chindi.

The hill station also serves as a good base for exploring Karsog valley which has well known temples like the famous Kamaksha Devi, Mahunag and Mamleshwar Mahadev temple.

From Shimla, Chindi is at a distance of 95 km.



Barot

Nestled in the calm and scenic River Uhl valley, Barot was protected as a reserve and a summer getaway by the former rulers of Mandi principality. The place only got noticed when Raja Joginder Sen of Mandi royal house in 1925 decided to harness the rivers waters for a hydropower plant.

Thickly forested hillsides with the river holding an abundant of trout fish flowing in the valley, alpine meadows for setting up camps and a hospitable people make Barot as a must go to place for those seeking a quiet mountain holiday. The Nagru Wildlife Sanctuary, upstream of Barot, conserves rare Himalayan flora and fauna.

Besides game fishing for exotic trout fish, the valley has ample opportunities for trekking, with one route going over Bhubu Pass into Kullu valley and the other more difficult one, going over Thamsar Pass, origin of Uhl river, into Bada Bangal valley would get the adrenalin of any seasoned trekker going. Barot can be reached by road. It is 40 km from Jogindernagar and 65 km from Mandi.



Churdhar

The highest peak of Sirmaur, Churdhar rising to 3,647 meters is a trekkers delight. The views are so wide that George Everest, a surveyor general after whom the world's tallest peak is named, used the vantage point of Churdhar to survey much of the western Himalayas from. Peaks around Badrinath and Kedarnath can be seen from here and towards the south, vast plains of the Gangetic plains open up to meet the horizon.

Churdhar is accessible from three routes, Chopal, Nohradhar and Haripurthar stations. Passing through small villages, cultivated fields and alpine meadows the trek is moderately difficult but rewarding. Summiting the peak, on a clear day is rewarded with a riot of views. Just below the summit is the temple of Shirgul Devta, worshipped in the form of a lingam as Chooreshwar Mahadev. At the peak is a recently built temple of Lord Shiva.

Around the massive mountain there is a wildlife sanctuary.



Triund

For those who love the outdoors, Dhauladhar is excellent trekking country. To enjoying stunning views of the vast Kangra valley spread a summer trek to Triund (altitude 2975 meter), getting close enough to the snowline, is being in company of the spectacular peaks of the 'white ranges'.

Making way through thick oak and deodar forests with scattered rhododendron flowers in the path, this moderate trek starts at Galu temple, about 3 km from Dharamkot and 10 km from Mcleodganj. The last stretches of the trek are demanding as you make your way up 22 gruelling loops to an open camping ground.

Popular among weekenders and day-hikers, the trek offers chances of brief but thrilling encounters with beautiful birds and wild animals. The walk down is an easy run into the breeze. Triund is 7 km from Mcleodganj.

High altitude and proximity to Laka glacier and Indrahara Pass makes weather of Triund highly unpredictable as a hot and sunny day can turn into a small snowstorm in matter of minutes.



Bhawa Pass

The asphalted road that refuses to leave sight of the River Sutlej until Wangtu gives way to a narrow road leading to Kafnu – base for one of the most beautiful trek routes in Himachal, the Bhawa trek.

The ascent in the valley alongside a glacial fed stream to Bhabha Pass at 4890 meters altitude to enter Pin Valley in Spiti is a challenging adventure. A western route from the Bhawa Pass gets into Parbati valley of Kullu.



Rewalsar

Rewalsar is a small scenic hillside town that is well known for its pagoda-style monasteries built on the banks of a holy lake.

The towering presence of a 150 feet tall statue of Padmasambhava, overlooking the holy waters, is indicative of the places' spiritual importance. The monasteries have well preserved old stucco sculptures, wall murals, and wall paintings.

A convergence of religions takes place at Rewalsar as the place is held sacred by Hindus, Sikhs and Buddhists alike. There are temples and a Gurdwara also by the lakeside. The fish in the lake waters are considered sacred and no fishing is permitted.

A legend narrates that the King of Mandi wanted to kill Guru Padmasambhava when he learned that his daughter Mandarava had become a devotee of the Guru and wanted to run away with him.



Bir, Billing Tibetan Colony

Not far from Palampur, at a distance of about 30 km, is the Buddhist colony of Tibetans at Bir. It was Neten Chokling, an incarnate lama of the Nyingma school, who settled at Bir in 1966 to lay the foundation of this settlement.

The community now has many monasteries in the area where traditions of Nyingma, Kagyu and Sakya schools of Tibetan Buddhism are followed and practiced.

The Dirru monastery belongs to the Sakya school, the Drikung Dozin Theckcho Ling monastery to the Kagyu school and the Palyuo Chokhorling Monastery is of the Nyingma school. The Choking Monastery at Bir has a large stupa and an impressive statue of Padmasambhava.

The Palpung Sherab Ling Monastery at Bhattu, west of Bir offers periodic courses in Buddhist meditation and philosophy.







EXPERIENCES





SPIRITUAL

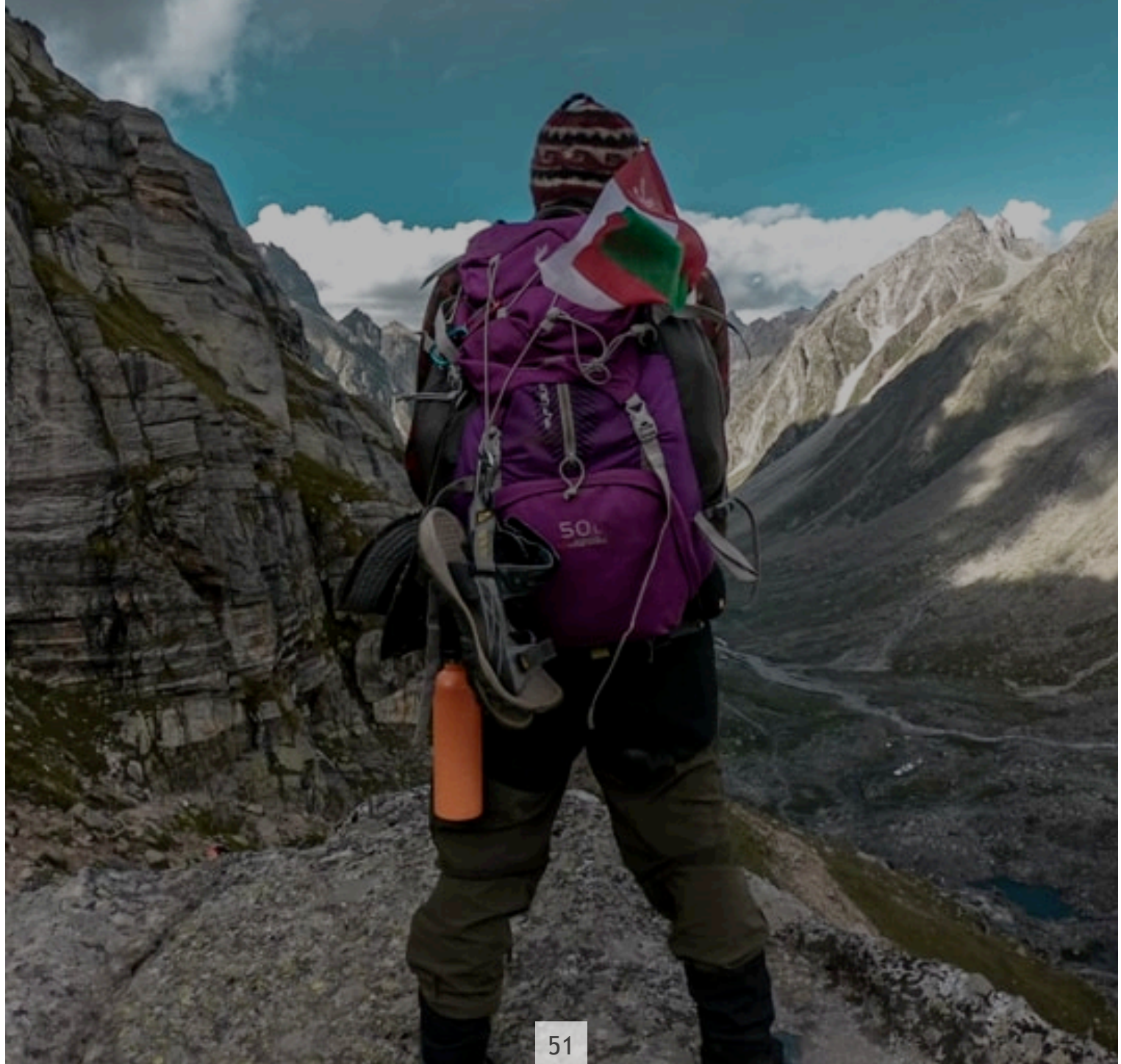
LAKES

A scenic landscape photograph of a large lake, likely a reservoir or a large natural lake. The foreground is dominated by lush green forested islands and peninsulas that jut out into the water. The water is a deep blue, reflecting the sky. In the background, a range of dark, forested mountains stretches across the horizon. The sky is filled with large, white, fluffy clouds. The overall mood is serene and natural.

ADVENTURE



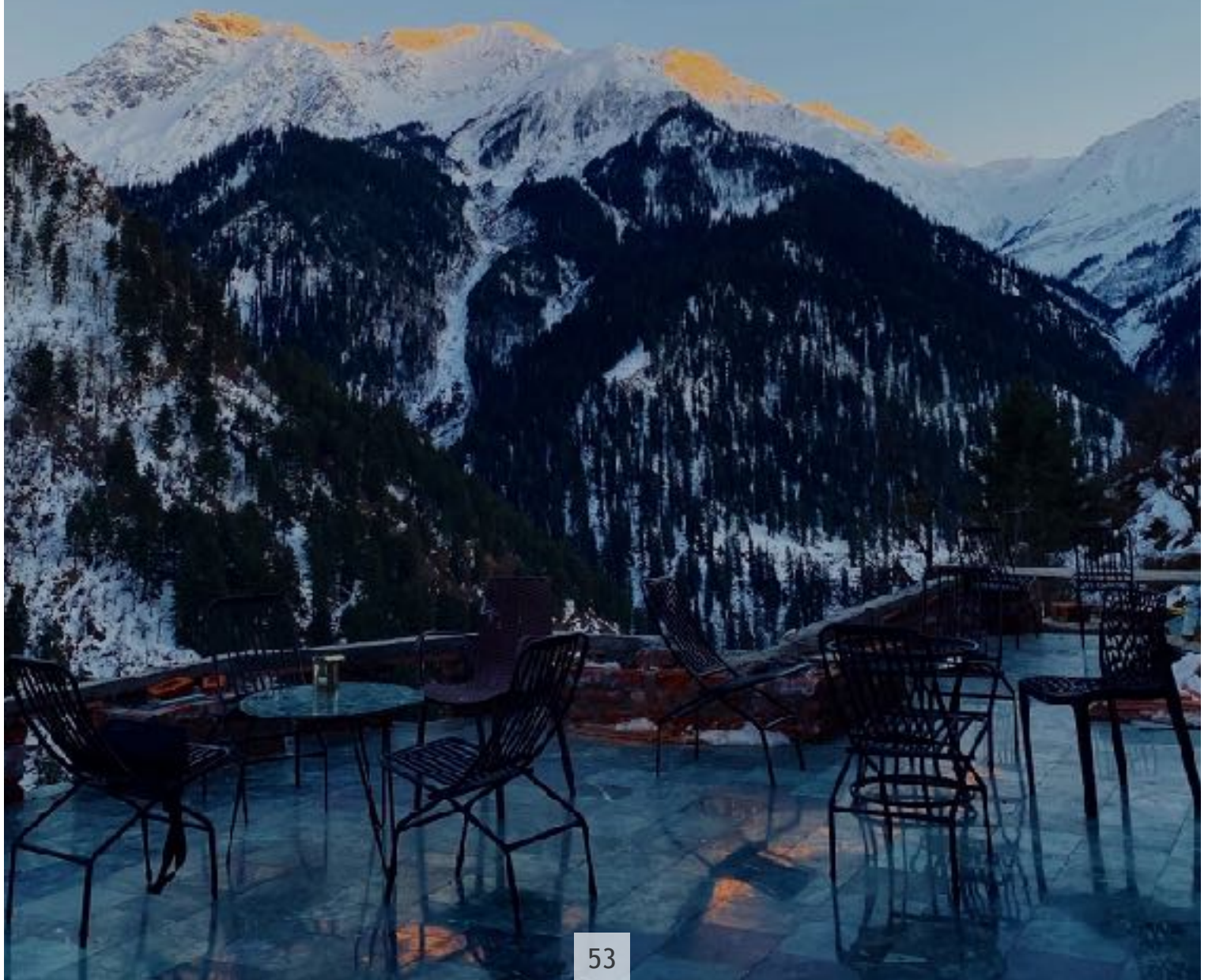
TREKKING



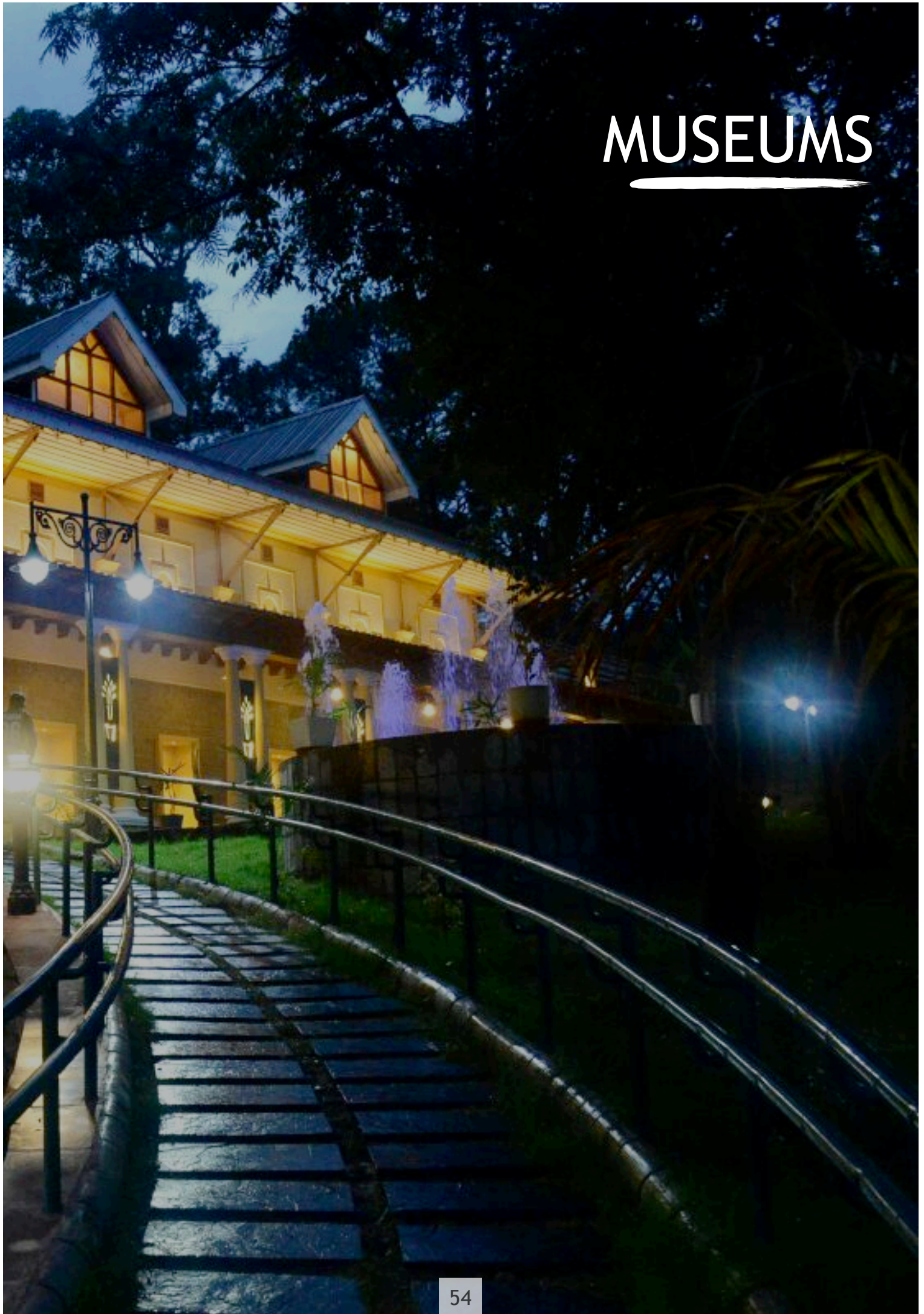
HERITAGE



HILL STATIONS



MUSEUMS



FOLK DANCE



HOT SPRINGS

A photograph of a hot spring. The water is a vibrant green color, likely due to mineral content. Steam is rising from the water, creating a misty atmosphere. The spring is surrounded by dark, jagged rocks. In the background, there is a snowy area with some trees and a small structure.

ART & CULTURE



CUISINES

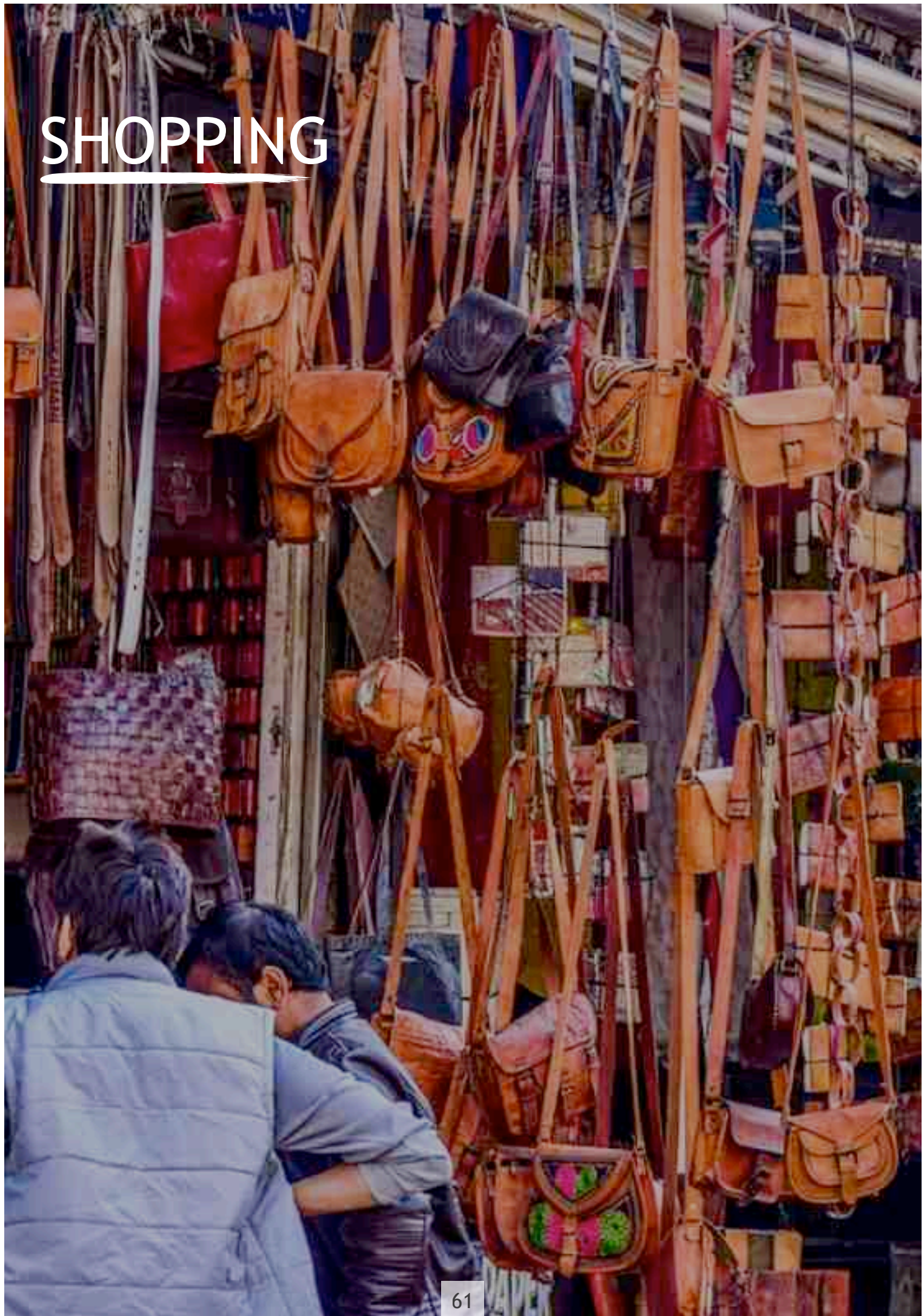


RIVERS



PEAKS

SHOPPING



WILDLIFE





FAIRS & FESTIVALS





ACTIVITIES



Triund Hill – Go Trek This Heavenly Place

Situated on the laps of Dhauladhar Range at an elevation of 2850 meters, trekking at the Triund Hill is one of the best things to do in Himachal Pradesh. The trail is mesmerizing and super exciting for trekkers. The place involves some of the breathtaking views of the Gallu Devi Temple, Shri Kunal Pathri Devi Temple, Shiva Cafe, and Bhagsu Waterfalls. Happy Trekking!



Great Himalayan National Park – For A Nature Meet

Spread in an area of 754 sq km, the Great Himalayan National Park is one of the UNESCO World Heritage Sites located in Kullu. The region is filled with high alpine peaks, alpine meadows, and riverine forests and it also includes several mountain glaciers and rivers. The National Park houses abundant vegetation and more than 375 species of animals. Spend some quality time with scenery and animals. Want more? Well, you can also opt for the Jungle Safari at the Great Himalayan National Park.

Khajjiar Lake – Explore The Mini Switzerland Of India

Blanketed with snow and cedar forest, Khajjiar Lake is one of the fundamental attractions of Khajjiar. With lush greenery meadows, the entire surrounding is very peaceful and people can spend nearly an hour by just loitering. The lake also provides a picturesque view of Mount Kailash. Zorbing, Horse riding, and Paragliding are the most cherished activities near this place.





Kullu Dussehra – Seek Blessings

Kullu Dussehra is a one-week long festival which is celebrated in October every year. This festival commences on the tenth day of Dussehra and continues for the next seven days. The festival is celebrated to mark the triumph of good over evil. In 1972, Kullu Dussehra was announced as an International Event and it is visited by around 4-5 Lac devotees every year. Revive all your anxiety and experience this spiritual and rustic way of life.

Naldehra Golf Course – Test Your Golf Skills

Naldehra Golf Course is one of the free things to do in December for all golf enthusiasts near Himachal Pradesh. Set up on the tall cedars, Naldehra is a nine-hole course that is surrounded by a bouncy turf and an orchard of deodars. Besides, one can stop by the golf course to enjoy the views. The turf is open throughout the year with a minimal green fee and one can also hire golf sets, balls, and caddies on rent.



Dharamshala – Appreciate The Tibetan Opera

Established in August 1959, the Tibetan Institute of Performing Arts in Dharamshala is renowned for conserving and endorsing Tibet's art and culture. The traditional Tibetan Opera or Lhamo which is a 9-day long celebration is the main highlight of the Institute. Attending the Tibetan Opera and enjoy every moment of the gala.

Hanuman Tibba – Go Heli-Skiing

Heli-Skiing at Hanuman Tibba is one of the offbeat things to do in Himachal Pradesh in December. Hanuman Tibba offers a fun and thrill of heli-skiing in the snow-packed Himalayas. Heli-skiing in the natural snow is immensely beautiful and the performer has to put a lot of effort into this activity. A helicopter is used for the downhill process.



Bir Billing – Fly High In The Skies

Paragliding in Bir Billing is one of the fun things to do in Himachal Pradesh.

Situated at an elevation of 2300 meters, Bir Billing is an enticing and appealing destination for all adventure enthusiasts. The pilots are well expertise and discipline. Jumping from a height of 8000 ft above the sea-level is a once in a lifetime experience.

Green Shopping – Explore The Shops In McLeod Ganj

One of the things to do in Himachal Pradesh is to explore the streets of McLeod Ganj. Known for its traditional handloom works and crafts, McLeod Ganj is the best place for the lover of antique things.

Some of the best things to buy in McLeod Ganj include Singing Bowls, Buddha Statues, Tibetan Handicrafts, Colorful Notebooks, Handcrafted Diaries and Handmade Paper, Rugs, Paintings, Carpets, and more.





Spiti Valley – Witness The Tabo Monastery

Wondering what to do in Himachal Pradesh? Witness the century-old Tabo Monastery in Spiti Valley. Positioned at an altitude of 10007 ft, Tabo Monastery is widely regarded as the Ajanta of the Himalayas. Sprawled over an area of 6300 sq meter, Tabo Monastery consists of nine temples, four stupas, and 23 chortens. This historic Buddhist treasure is decorated with attractive murals and ancient paintings. Must Visit!

Manali – Experience The Igloo Stay

Experiencing the Igloo Stay is one of the coolest things to do in Himachal Pradesh during the winters. Every year, people from different states visit Manali to make their weekend chilling. The Igloo stays are nestled within the snow-capped regions of the Himalayas. Besides, Tube Slide and Slide Ride are some of the activities available in the snow-covered region.



Rohru – Try Fishing

Fishing adds a new flavor to the vibes of the state and this is one of the things to do in Himachal Pradesh. Situated on the banks of river Pabbar, Rohru offers several fishing opportunities for fishing enthusiasts. Rohru is one of the best spots for trout fishing in this state and it is known for the production of brown and rainbow trout fish.

Himachali Cuisines – Treat Your Taste Buds

Craving for some sumptuous, lip-smacking Himachali cuisines? Then your hunt is over. Relish some of the authentic Himachali Cuisine at the Himachali Rasoi Restaurant in Shimla. Food is all local to the region and celebrates its history and tradition. Known for its tasteful variety and unique aroma, this little restaurant is a perfect combination of delicious food, a pleasing atmosphere, and warm hospitality.



Down hill cycle to Naggar

The quaint town of Naggar near Kullu is favourite for cyclists since the route from Manali to this artist's paradise is mostly downhill and scenic. Stop by the 500-year-old Naggar castle en route as to take a break before the fairly tough 22 km uphill return. You can also choose to take a 12 km uphill route from here to visit the popular Jana falls.

Go rafting in Kullu valley

Brave level 1 to 4 rapids of the Beas river and set off on a white water rafting adventure. You can choose from a bunch of private operators at Pirdi, where the trip usually begins, and rumble 14km downriver to Jhiri. The activity is usually closed during rains and at the peak of winter.





Live in a heritage hotel in Shimla

Hotel Woodville Palace in Shimla was the former summer residence of the Raja Rana of Jubbal, a pre-independence kingdom of the Shimla Hill States. Each room at this heritage hotel is inspired by Shimla's days as the summer capital of British Raj. Check in and step back in time.



Go mountain biking in Spiti

The arid desert plateaus of Spiti Valley make for interesting biking route. The picture perfect surroundings and a chance to ride through the Kunzum Pass (4,590 mtrs) is an opportunity no biker will want to miss. Needless to say, this require extreme levels of fitness and stamina.



Go rock climbing at Vashisht

This is only for the fit and the brave. While you clamber up and down crags, you are treated to views of ancient temples, monasteries, traditional Himachali wooden houses & massive Himalayan peaks.

Camp in the snow at Mashobra

Experience the snow and spend your time cuddled up in a blanket, with a warm cup of tea and a book while you stare at the majestic mountains or sing the night away around a campfire. Barely 12km from Shimla, Mashobra offers various campsites that can give you this out-in-the-wild experience.



Trek to Malana

Malana village near Parvati Valley is shrouded in mystery. The villagers believe that they are descendants of Alexander the Great's soldiers. Of course, it is more famous for the legendary Malana Cream, but you knew that already. You can start the trek from a place called Jari in Kasol, 21km from the village.

Hampta Pass and Chandratal Trek

Hampta valley lies in the base of the towering Pir Panjal's, is a beautiful scenic valley offering the lush verdant greens of the alpine vegetation on one hand, with meander rivers flowing swiftly like slithering snakes, from amongst these rivers flow out the fuming cascading streams through the rocks and moraines. The occasional visit of endangered species of animals and birds are also a sheer delight for a trekker's eye. The snow clad peaks of Deotibba and Indrasen are also visible.





GENERAL INFORMATION

Welcome to Himachal Pradesh

Himachal Pradesh is a state of North India. It is placed in the middle parts of great Himalayas with altitude ranging from about 1148 ft to 22966 ft above the mean sea level. The capital town of Himachal Pradesh, Shimla, is the only place in India where you will find natural ice skating rink.

Himachal means "a range of area or land covered by snow" (Him - snow and Achal - land or area). Hinduism (above 95%) is the main religion of the state. Hindu culture and tradition increased here from the ancient history. The ancient Hindu people of India believed that the Himachal Pradesh is the residential place for Hindu God and Goddess.

Geography

Himachal Pradesh has a great tourist value. We have to know details about it before our trip or journey started. It is a state of Indian hill area. The northern part of India is covered from East to West by the great Himalayas. Himachal Pradesh is placed in the western Himalayas and it covers a region of 55,673 square kilometers with altitude variety from about 350 meters to 7,000 meters above the mean sea level.

Climate

The complex variations of height have made the climate of the land a unique characteristic. You will find different temperatures in different districts of Himachal Pradesh.

The weather of Himachal mainly depends on the geographical height from the mean sea level. We know, the decrease rate of temperature is proportional to the increase rate of height.

Districts & Subdivisions

Himachal Pradesh is built with 12 separate districts. They are Shimla, Kangra, Hamirpur, Mandi, Bilaspur, Una, Chamba, Lahul and Spiti, Sirmour, Kullu, Solan and Kinnaur. Among them Shimla district is the capital of Himachal Pradesh.

The administrative of a district is controlled by a Deputy Commissioner or a District Magistrate who is an officer belonging to the Indian Administrative Service. Each district is subdivided into several Sub-Divisions which are controlled by sub-divisional magistrate.

Flora & Fauna

Himachal Pradesh largely covered with forest. The forest of the state is divided into six types, namely they are Moist Tropical Forests, Dry Tropical Forests, Montane Sub-Tropical Forests, Montane Temperate Forests, Sub-Alpine Forests and Alpine Scrub forest.



Shimla's famous Apple Almond cake

fresh
lime soda

HOMER
BROWN
WITH
CHOCOLATE
₹ 150
CHOCOLATE
FUDGE
SUNDAE



apple ₹5
almond ₹70

rich ₹5
biscuits ₹70

bakery ₹5
biscuits ₹70

FOR ALL CHOCOLATE
BROWNIE LOVERS

chocolate
fudge ₹5
₹70

soften
fudge ₹5
₹70

rich ₹5
chocolate ₹70

NESCAFÉ

OUR BEST
PRODUCT

BROWNIE
CHOCOLATE
SAUCE
ICE CREAM

CHEESE CAKE



CHERRY DOLLS
ALMOND R. 70

LEMON R5
APRICOT 70

CARROT R6
YASMIN
CARROT 70

LAMB
BURGER
+

fresh
lemon
ice tea

COMBO! COMBO!

COMBO! COMBO!

NIMBOO
MASALA
SODA

THAN
DAA!

NIM
MAS
S

embassy
Cakes
by
ing Mathur

LUXURY JOURNEYS

A photograph of a two-story stone building with green shutters and a cobblestone courtyard at dusk. The building has a rustic, stone facade and large windows with green shutters. The courtyard is paved with cobblestones and has several potted plants. A scooter is parked on the left. The sun is setting behind trees on the left, creating a warm, golden glow. The text "LUXURY JOURNEYS" is overlaid in white at the top left.

Best of Himachal Journey

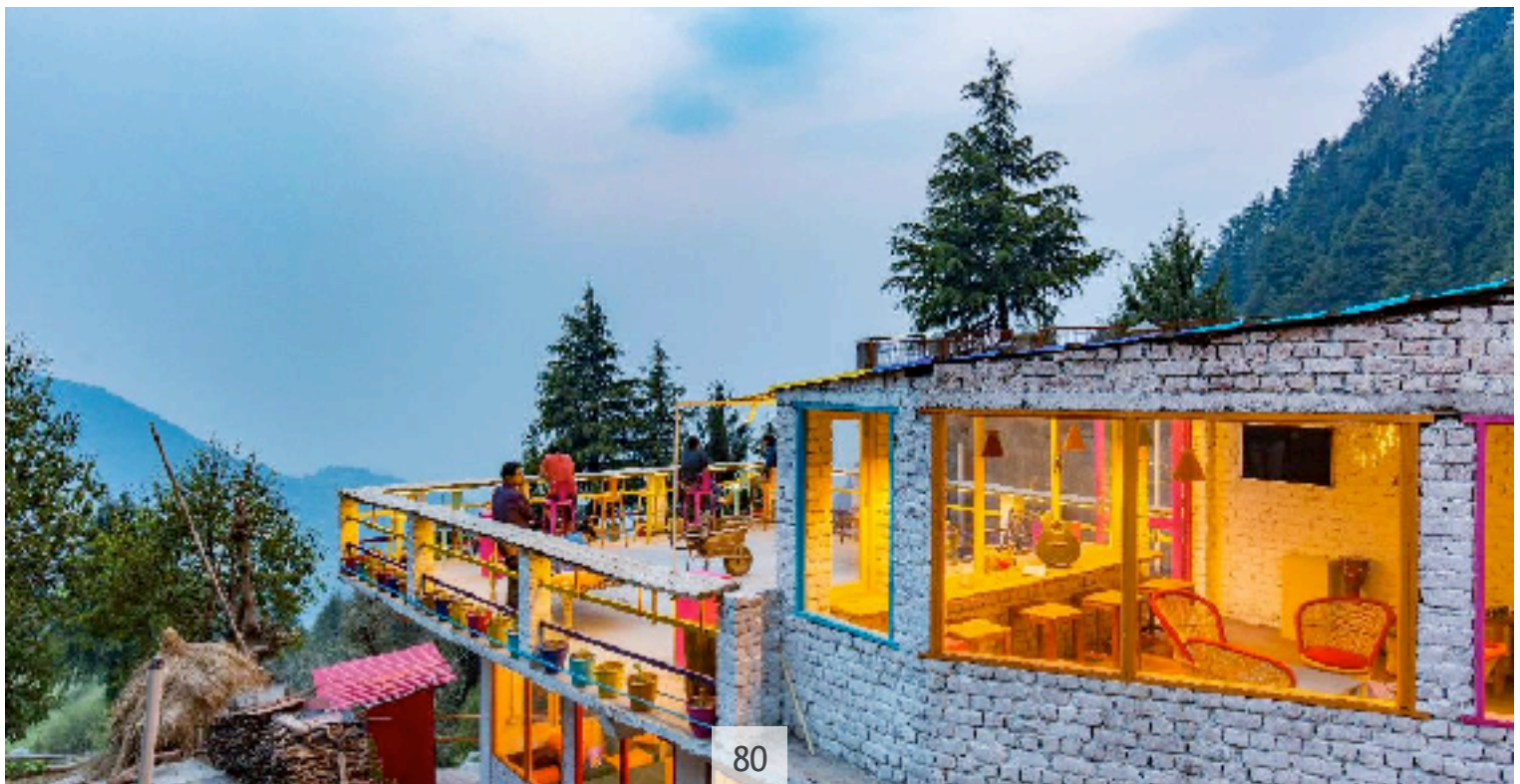
Duration: 10 Nights / 11 Days

Places: Delhi | Chandigarh | Dalhousie | Khajjiar | Dharamshala | Manali | Shimla | Kalka | Delhi

Himachal Pradesh is among the most visited top mountain tourist places in North India, Himalayas region. It gifts you with memories that last for a lifetime. Its landscape has a lot to do with it: valleys, mountains, ancient monasteries, historical sites, lakes, mountain passes! A Himachal Pradesh tour satisfies the wanderlust in you, whatever it is you may be looking for.

A holiday to beautiful Himachal does not get any better than this! Spend your fun-filled holidays amidst the snow-capped Himalayas and admire the beauty of enchanting nature at its best. You can take a trip to some magnificent places like Manali, Shimla, Dalhousie, Kullu and Dharamshala. The natural richness of all these places will create a wonderful effect on your trip to Himachal. Our Himachal holiday package will make the vacations a special one.

Take a tour to the incredible Himachal with the vivid landscapes, majestic apple orchards, lush-green forests, verdant valleys and snow-capped Himalayas. Our 10 nights and 11 days package have been specially designed to explore the incredible and pristine beauty of the Himachal and have unforgettable vacations.



Himachal Honeymoon Journey

Duration: 07 Nights / 08 Days

Places: Delhi | Shimla | Kufri | Shimla | Manali | Rohtang Pass | Manali | Delhi

Snuggled in the western part of the Indian Himalayas, Himachal Pradesh is a trove of natural and geographical riches that allures honeymooners to spend some quality time in serenity.

Our seven nights and eight days Himachal Honeymoon Package gifts you the pleasure of experiencing the tranquility of this hills station. Shimla, being the capital of Himachal welcomes the visitors with various tourist attractions like Kufri (a small and sweet hill station), Ridge Maidan (one of the snowfall spots) and Mall Road (the main street providing a cityscape).

Kufri is a resort hill station in the district of Shimla, India. It is located 20 km from the state capital Shimla on the National Highway No. 22. On the Kufri Avenue, the main thoroughfare, boutiques and restaurants mix with Indian-style hotels and souvenir shops are to look for during a visit.

Further, our Himachal tour package also takes you to some of the must visit destinations of Manali like the Sollang Valley, Rohtang Pass, natural thermal springs, Hadimba Temple and so on. In a nutshell, the exquisiteness of the place is wonderfully wrapped in this Himachal Travel Package.



Exotic Himachal Journey

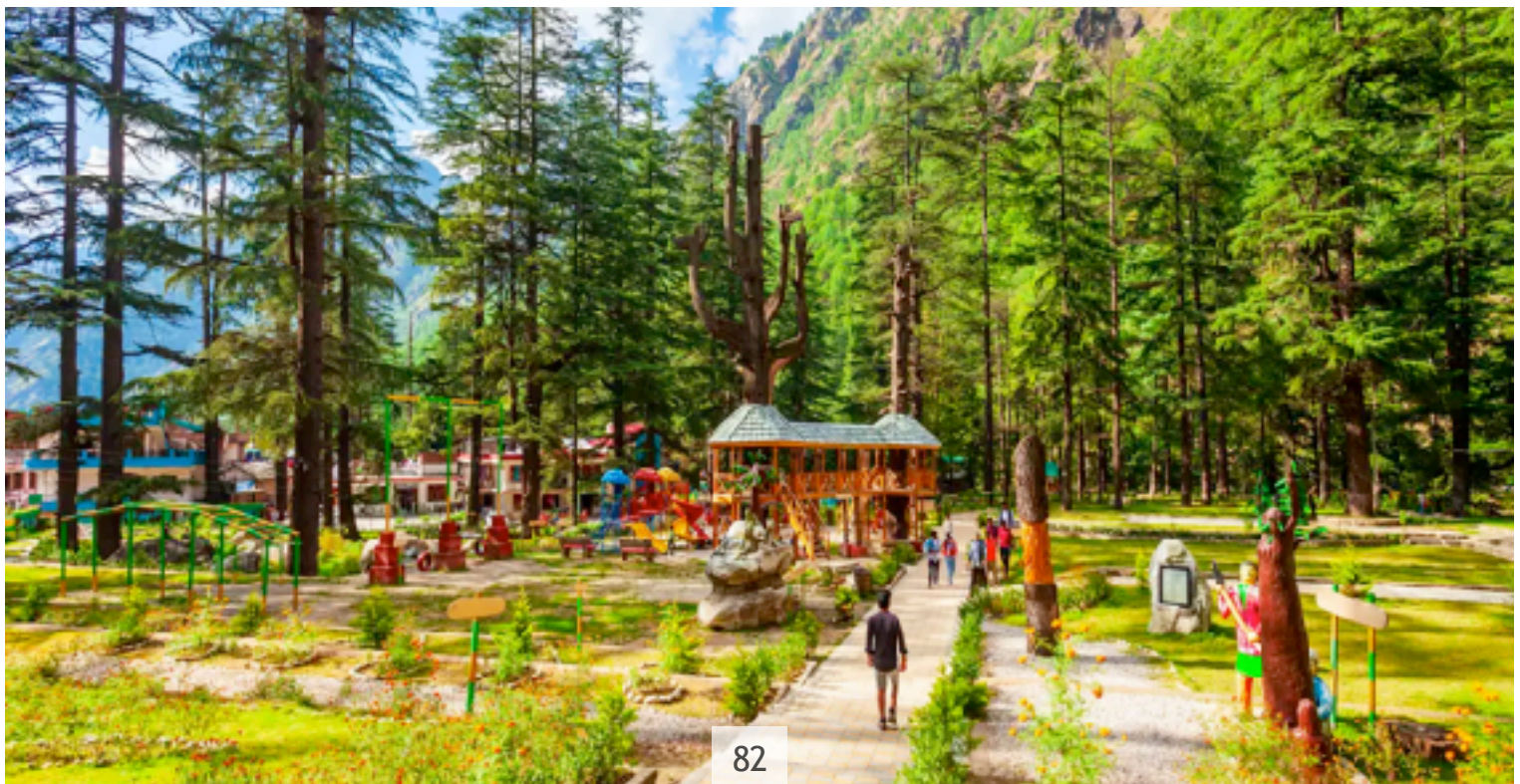
Duration: 08 Nights / 09 Days

Places: Delhi | Manali | Rohtang Pass | Manali | Chamunda | Dharamshala | Dalhousie | Khajjiar | Chandigarh | Delhi

With our Exotic Himachal Pradesh Tour Package we welcome you to a traveler's paradise. This eight nights and nine days tour package takes you to the most visited tourist destinations of Himachal – Manali, Dharamshala and Dalhousie. On one hand the snowy slopes of Rohtang Pass and serene surroundings of Hadimba Temple at Manali entice the travelers and on the other hand the picture perfect vistas of Dharamshala leave them awe-struck.

Further, a visit to Khajjiar while driving towards Dalhousie provides ample opportunities to you for praising the grandeur of nature in Himachal.

Manali is a high-altitude Himalayan resort town in India's northern Himachal Pradesh state. It has a reputation as a backpacking center and honeymoon destination. Set on the Beas River, it's a gateway for skiing in the Solang Valley and trekking in Parvati Valley. It's also a jumping-off point for paragliding, rafting and mountaineering in the Pir Panjal mountains, home to 4,000m-high Rohtang Pass.



Grand Himachal Luxury

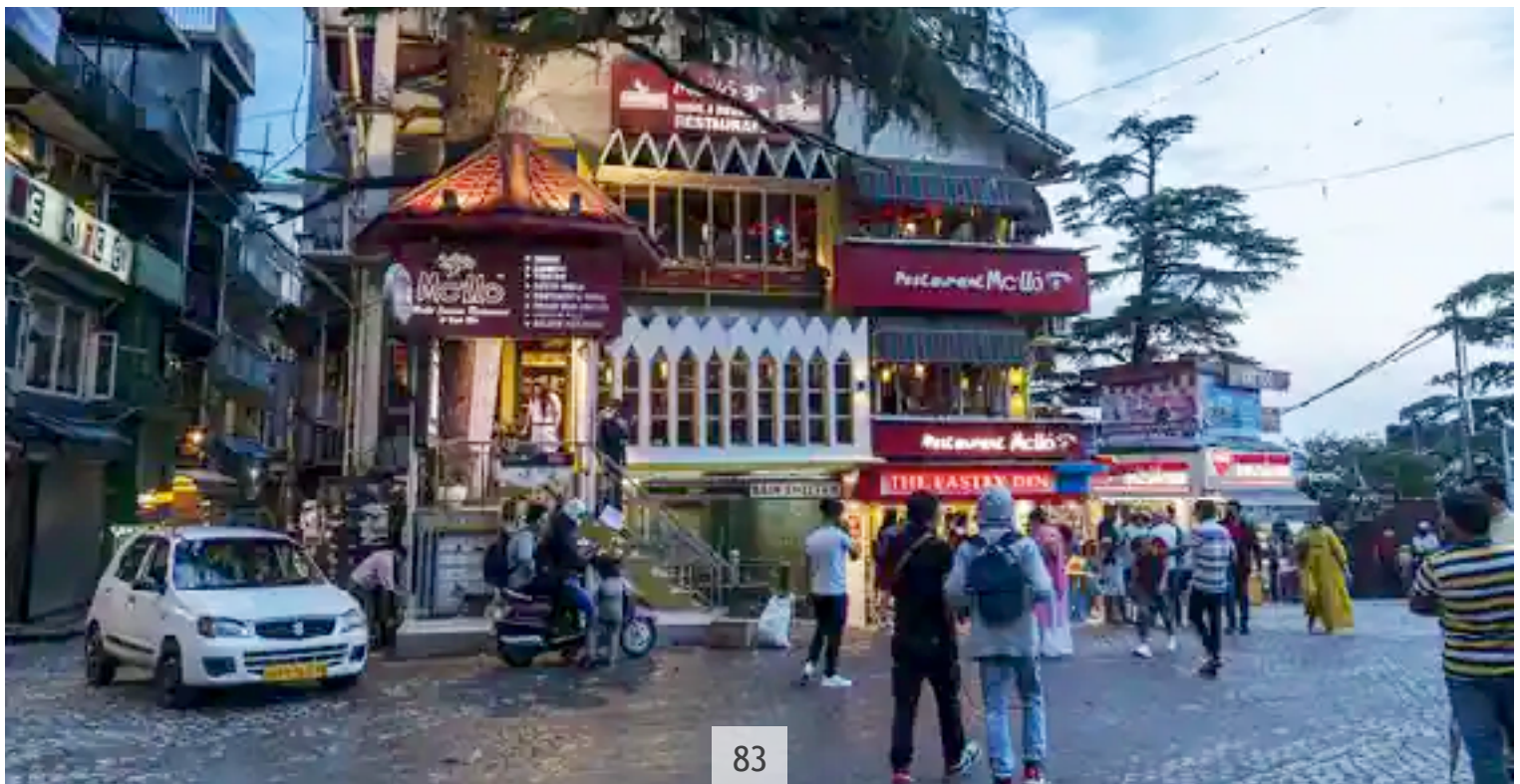
Duration: 11 Nights / 12 Days

Places: Delhi | Shimla | Manali | Dharamshala | Khajjiar | Dalhousie | Amritsar | Delhi

Himachal Pradesh is called the “Devbhumi” as it is regarded as the Land of the Gods. Located in the northern part of India, Himachal Pradesh is known for its glorious hill station. For any tourist, this hill station is a dream. It has all the ingredients of a perfect holiday. The state is bordered by the ever-beautiful Jammu and Kashmir to the north, Punjab to its west and the Tibetan plateau to the east.

Shimla is the capital of the northern Indian state of Himachal Pradesh, in the Himalayan foothills. Once the summer capital of British India, it remains the terminus of the narrow-gauge Kalka-Shimla Railway, completed in 1903. It's also known for the handicraft shops that line The Mall, a pedestrian avenue, as well as the Lakkar Bazaar, a market specializing in wooden toys and crafts.

Dharamshala is a city in the Indian state of Himachal Pradesh. Surrounded by cedar forests on the edge of the Himalayas, this hillside city is home to the Dalai Lama and the Tibetan government-in-exile. The Thekchen Chöling Temple Complex is a spiritual center for Tibetan Buddhism, while the Library of Tibetan Works and Archives houses thousands of precious manuscripts.



Triund Trek Himachal Pradesh

Duration: 11 Nights / 12 Days

Places: Delhi | Chakki Bank | Dharamshala | Satobari | Kareri Village | Bahl Village | Triund | Laka Got | Triund | Bhagsu Nag | Dharamshala | Amritsar | Delhi

Triund Trek is one of the most popular treks to go over a weekend from Delhi and Chandigarh. It is perhaps the easiest Himalayan trek to do on your own. With breathtaking views of the Kangra valley and the snow-covered Dhauladhar ranges, it is also very picturesque. Triund is the ideal destination for those seeking a hassle-free taste of trekking in the Himalayas. The trek can easily be done over a weekend.

The trail to Triund is short but steep. The steep climb is well-compensated by refreshing walks amongst rhododendron and oak trees. There are also various songbirds in the forests along the trail which make it a birdwatcher's delight. Considering it's an easy trek and with the effortless accessibility from Dharamshala or Mcleodganj, there are a large number of trekkers who go this trek, making it difficult to enjoy the serenity of the place and can get crowded on top during the weekends or holiday season. It is better to experience the beauty of this trek during the weekdays.

The town of McLeodganj (also known as Little Lhasa) also provides for a grand opportunity to experience the vibrant Tibetan culture.







WEDDING & EVENTS



HOLA MOHALLA FESTIVAL



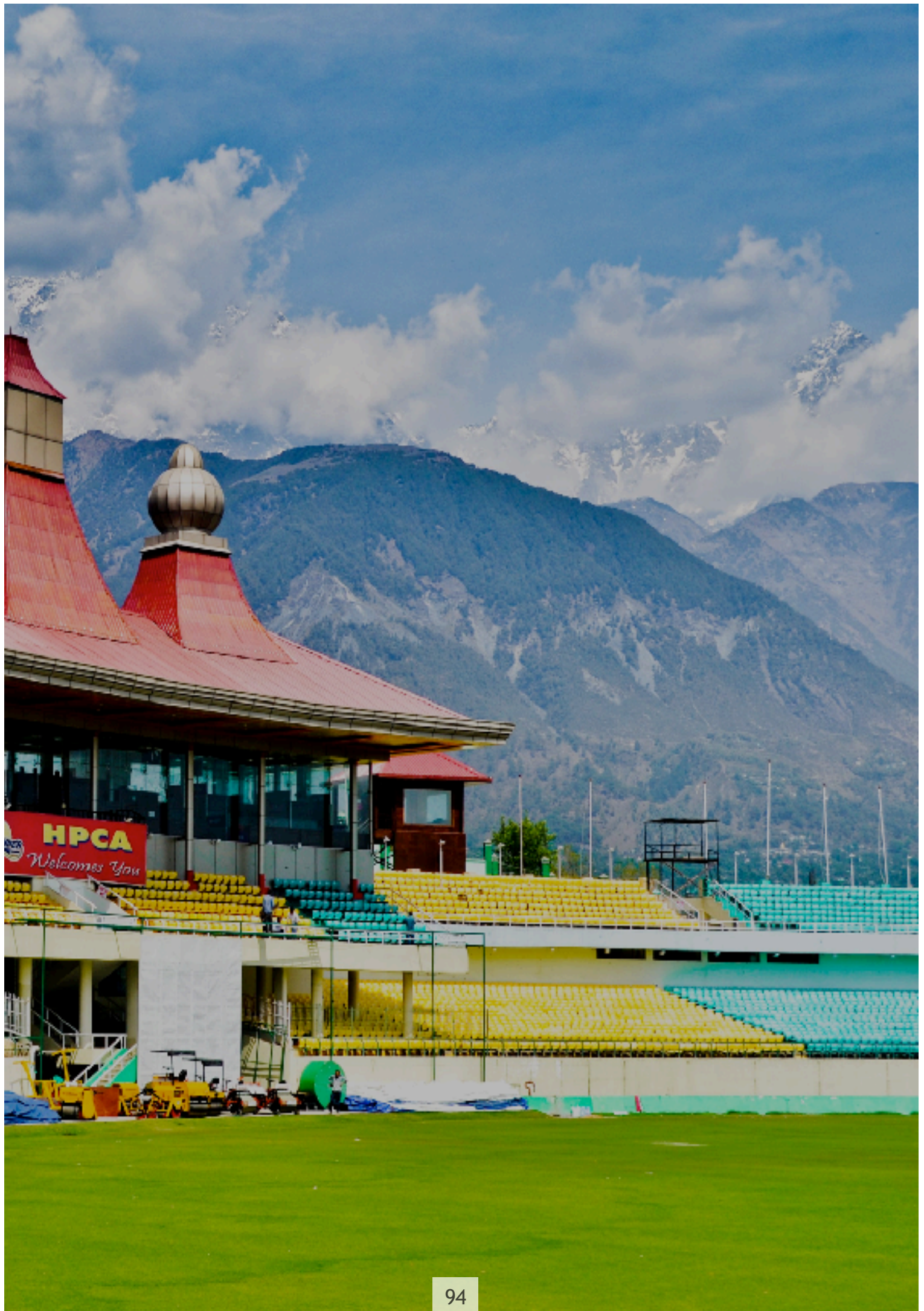




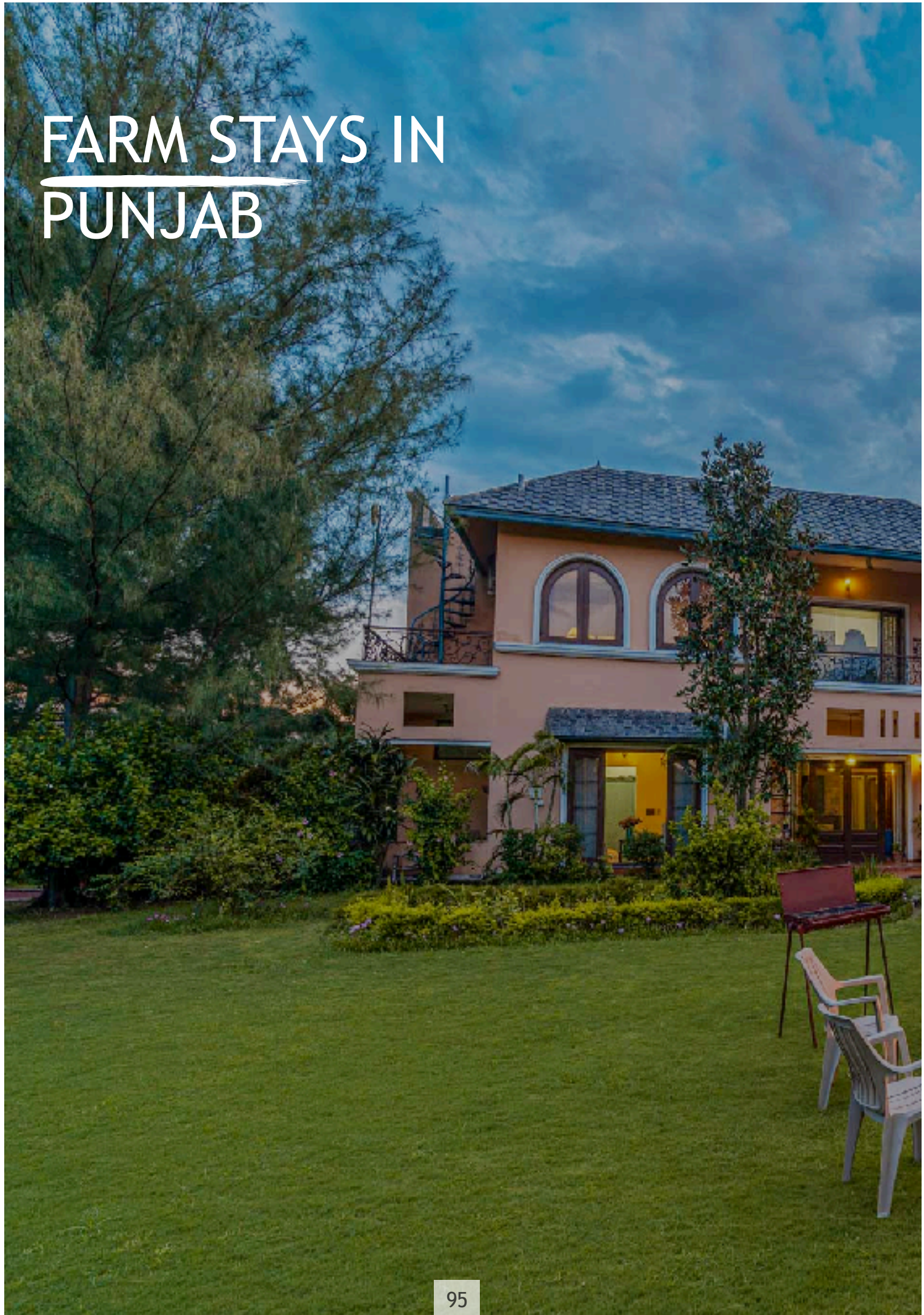


CRICKET IN DHARAMSHALA

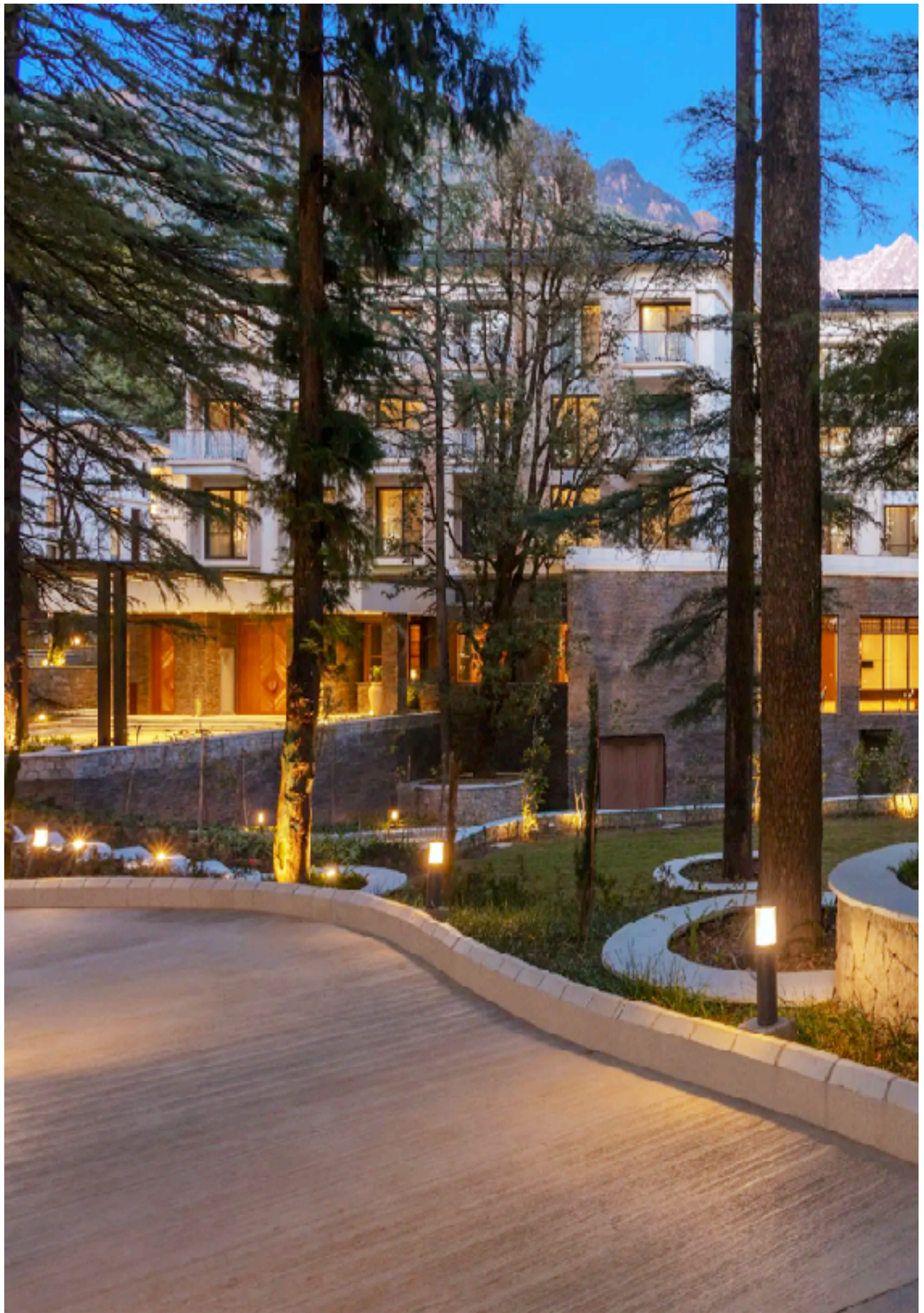


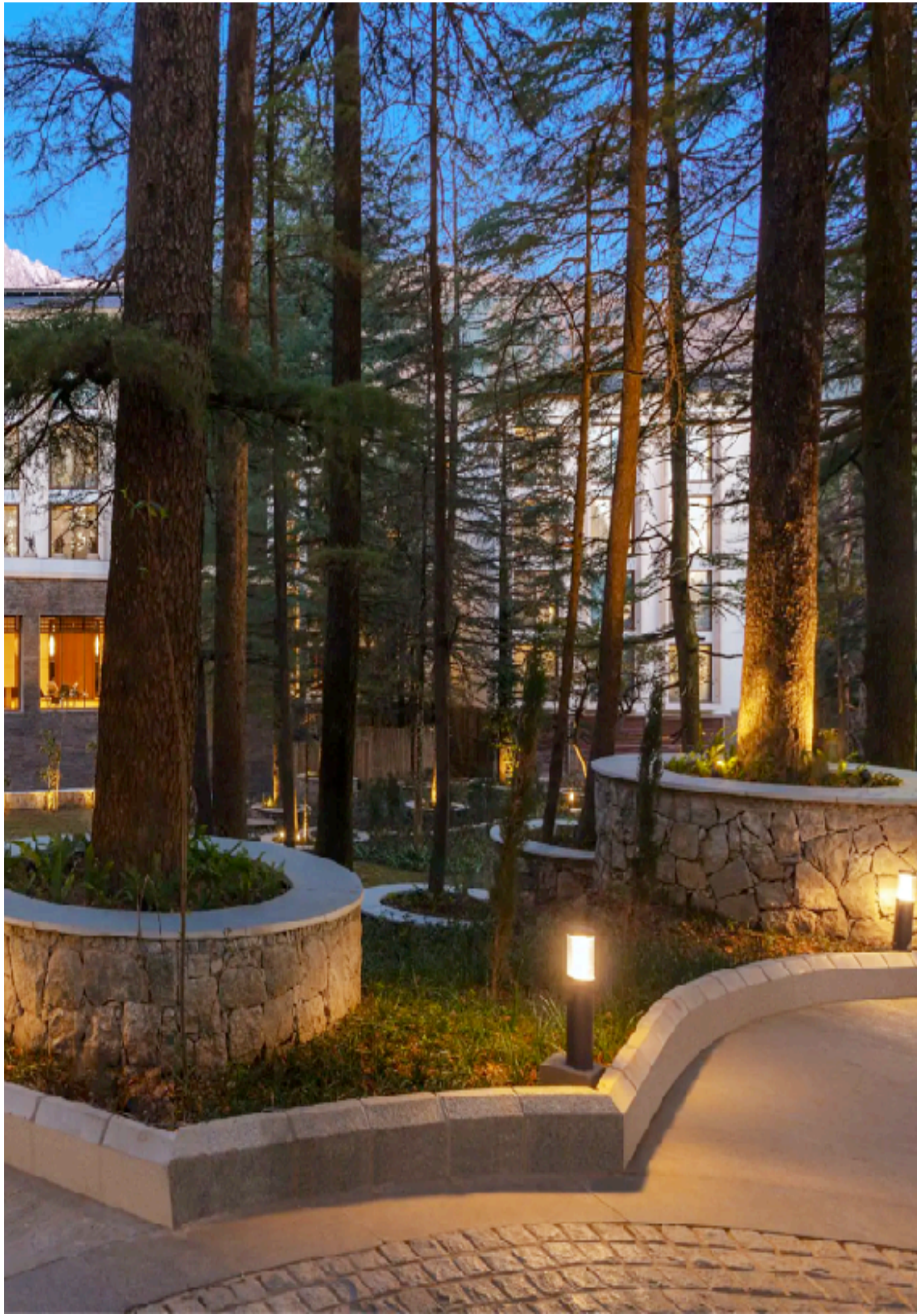


FARM STAYS IN PUNJAB









When will
you Travel?







SANYOG GUPTA VOYAGES

Luxury Destination Management Company

Made with  by **Sanyog**

Opulent Routes
The Luxury Experiences

opulentroutes.com

**Adventure
sense**
Expedition [LIVE]

adventuresense.com


IMEC PLANET
Experiences • Meetings • Events • Conferences

imecplanet.com

Charity Tours
It's a Challenge

charity-tours.com

+91 98100 30 233 | global@sanyog.travel | www.sanyog.travel

SCO - 83, Sector - 22, Palam Vihar Road, Delhi NCR, Gurgaon - 122002, Haryana, India
